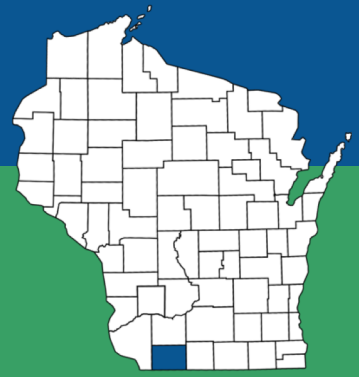
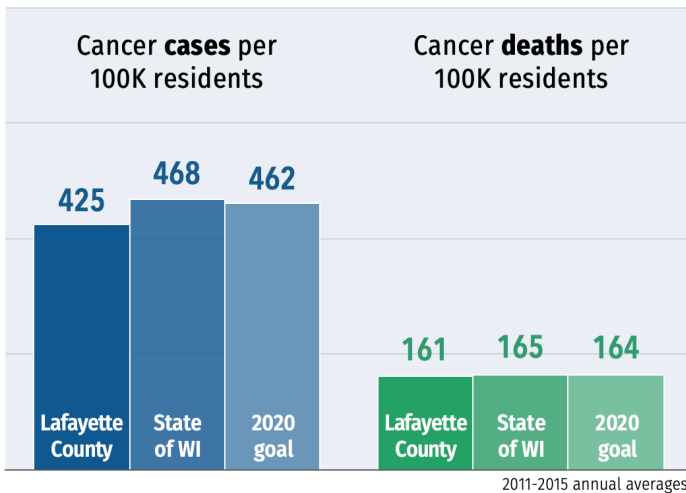


# Cancer in Lafayette County



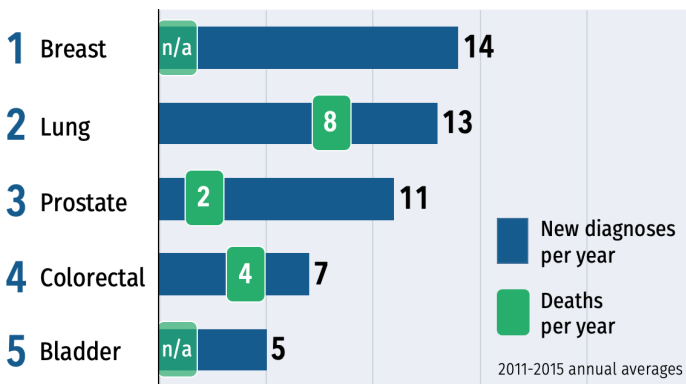
County population (2016):	16,753	State:	5.78 million
Percent rural:	100 %	State:	30 %
Percent racial minorities:	6 %	State:	18 %
Poverty rate:	12 %	State:	12 %

## Lafayette County cancer stats



2011-2015 annual averages

## County's 5 most common cancers



2011-2015 annual averages

## How Lafayette ranks among WI counties

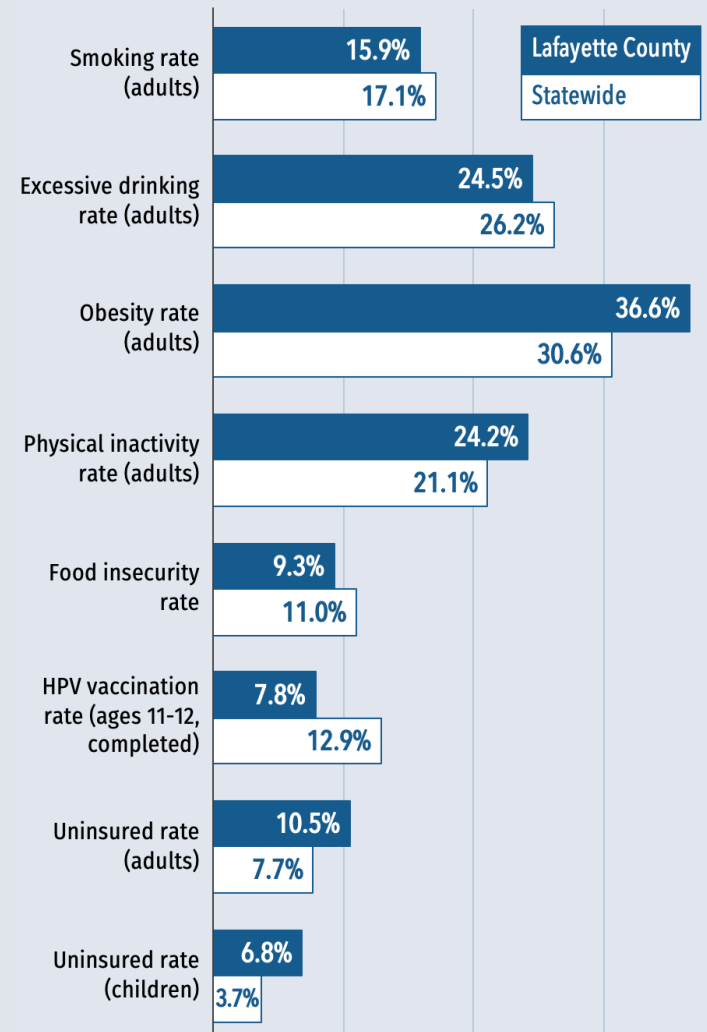
1st rank indicates the county with the highest 2011-2015 cancer rate

	All cancers	Lung	Prostate	Breast	Colorectal	HPV-related
New cases	55 <sup>th</sup> (72)	45 <sup>th</sup> (72)	52 <sup>nd</sup> (71)	8 <sup>th</sup> (72)	51 <sup>st</sup> (71)	4 <sup>th</sup> (69)
Deaths	44 <sup>th</sup> (72)	59 <sup>th</sup> (71)	19 <sup>th</sup> (65)	--	4 <sup>th</sup> (68)	--

Number in parentheses indicates number of Wisconsin's 72 counties that have sufficient data to be ranked for each measure.

## What affects cancer outcomes in Lafayette County?

A snapshot of social determinants and behaviors that can increase or decrease cancer risk



See reverse for more data & sources ▶



Comprehensive Cancer Control Program

# Cancer data profile for Lafayette County & Wisconsin

	Lafayette County	State of WI	Source	
<b>Cancer statistics</b>	New cancer diagnoses per year	91	31,773	2011-15 annual average, WI Cancer Reporting System
	Cancer incidence rate (diagnoses per 100k residents)	<b>425</b>	468	2011-15 annual average, age-adjusted, WI Cancer Reporting System
	Cancer deaths per year	36	11,420	2011-15 annual average, WI Cancer Reporting System
	Cancer death rate (deaths per 100k residents)	<b>161</b>	165	2011-15 annual average, age-adjusted, WI Cancer Reporting System
	Lung cancer incidence rate (per 100k residents)	<b>55.6</b>	60.0	2011-15 annual average, age-adjusted, WI Cancer Reporting System
	Breast cancer incidence rate (per 100k women)	<b>137.9</b>	129.7	2011-15 annual average, age-adjusted, WI Cancer Reporting System
	Prostate cancer incidence rate (per 100k men)	<b>97.3</b>	111.6	2011-15 annual average, age-adjusted, WI Cancer Reporting System
	Colorectal cancer incidence rate (per 100k residents)	<b>33.6</b>	37.6	2011-15 annual average, age-adjusted, WI Cancer Reporting System
	HPV-related cancer incidence rate (per 100k residents)	<b>15.0</b>	11.2	2011-15 annual average, age-adjusted, WI Cancer Reporting System
	Lung cancer death rate (per 100k residents)	<b>36.2</b>	43.0	2011-15 annual average, age-adjusted, WI Cancer Reporting System
	Breast cancer death rate (per 100k women)	-	20.0	2011-15 annual average, age-adjusted, WI Cancer Reporting System
	Prostate cancer death rate (per 100k men)	24.1*	21.2	2011-15 annual average, age-adjusted, WI Cancer Reporting System
Colorectal cancer death rate (per 100k residents)	<b>19.8</b>	13.7	2011-15 annual average, age-adjusted, WI Cancer Reporting System	
<b>Behaviors &amp; healthcare</b>	Adult smoking rate	<b>15.9%</b>	17.1%	2016 Behavioral Risk Factor Surveillance System
	Adult excessive drinking rate (report binge or heaving drinking)	<b>24.5%</b>	26.2%	2016 Behavioral Risk Factor Surveillance System
	Adult inactivity rate (report no leisure-time physical activity)	<b>24.2%</b>	21.1%	2014 Center for Disease Control & Prevention, Diabetes Interactive Atlas
	Adult obesity rate	<b>36.6%</b>	30.6%	2014 Center for Disease Control & Prevention, Diabetes Interactive Atlas
	Primary care physicians per 10k residents	<b>3.0</b>	8.0	2015 Area Health Resource File / American Medical Association
	Colorectal screening rate (FOBT last 2 yrs or colorectal endoscopy ever)	n/a	79.6%	2016 Behavioral Risk Factor Surveillance System
	Mammogram rate (last 2 yrs, age 40+)	n/a	75.7%	2016 Behavioral Risk Factor Surveillance System
	Pap test rate (last 3 yrs, age 18+ with no hysterectomy)	n/a	73.8%	2016 Behavioral Risk Factor Surveillance System
	HPV vaccination rate: Boys ages 11-12, completed	<b>6.8%</b>	12.0%	2017 Wisconsin Immunization Registry
	HPV vaccination rate: Girls ages 11-12, completed	<b>8.8%</b>	14.0%	2017 Wisconsin Immunization Registry
	HPV vaccination rate: Boys ages 13-17, completed	<b>22.5%</b>	34.9%	2017 Wisconsin Immunization Registry
	HPV vaccination rate: Girls ages 13-17, completed	<b>26.4%</b>	42.4%	2017 Wisconsin Immunization Registry
<b>Population demographics</b>	Population	16,753	5,778,708	2016 U.S. Census Population Estimates
	Rural percentage	100.0%	29.8%	2010 U.S. Census Population Estimates
	Age 65+ percentage	17.4%	16.1%	2016 U.S. Census Population Estimates
	High school graduation rate	n/a	88.4%	2014-2015 ED Facts
	Some college (percentage of ages 25-44)	<b>62.2%</b>	68.2%	2012-2016 five-year estimate; American Community Survey
	Minorities percentage (all groups except non-Hispanic white)	5.6%	18.3%	2016 U.S. Census Population Estimates
	Hispanic percentage	3.7%	6.7%	2016 U.S. Census Population Estimates
	African-American percentage	0.5%	6.3%	2016 U.S. Census Population Estimates
	Asian percentage	0.4%	2.8%	2016 U.S. Census Population Estimates
	American Indian percentage	0.6%	1.1%	2016 U.S. Census Population Estimates
<b>Social &amp; economic factors</b>	Median income	<b>\$56,074</b>	\$56,808	2016 Small Area Income & Poverty Estimates
	Unemployment rate	<b>3.3%</b>	4.1%	2016 Bureau of Labor Statistics
	Poverty rate	<b>11.7%</b>	11.8%	2016 Small Area Income & Poverty Estimates
	Children in poverty	<b>18.0%</b>	15.7%	2016 Small Area Income & Poverty Estimates
	Children in single-parent homes	<b>26.0%</b>	31.5%	2012-2016 five-year estimate; American Community Survey
	Food insecurity (percentage without a reliable food source in past yr)	<b>9.3%</b>	11.0%	2015 Map the Meal Gap
	Uninsured adult rate	<b>10.5%</b>	7.7%	2016 Small Area Income & Poverty Estimates
	Uninsured youth rate	<b>6.8%</b>	3.7%	2016 Small Area Income & Poverty Estimates
	Violent crimes per 100k residents	<b>52</b>	281	2012-2014 Uniform Crime Reporting; FBI
	Air pollution rating (PM2.5 rate)	<b>10.0</b>	9.3	2012 Environmental Public Health Tracking Network

- Data not reportable due to less than 10 cases

\* Five-year rate unstable due to less than 20 cases

n/a - Not available at county level

**Red** = County stat is worse than state average

**Blue** = County stat is better than state average