



News from the Wisconsin Cancer Collaborative | June 2025

AWARENESS

June is National Cancer Survivors Month

There are an estimated 18.1 million cancer survivors in the United States, a number that represents approximately 5.4% of the population. The number of cancer survivors is projected to grow to 26 million by 2040.



National Cancer Survivorship Awareness Month seeks to honor cancer survivors living in the United States. We've curated a round-up of cancer survivorship resources for you to use this month and throughout the year.

[National Cancer Survivorship Awareness Month Toolkit](#) - George Washington Cancer Center offers a toolkit with ready-to-use graphics and social media captions regarding survivorship awareness.

[Survivorship Toolkit for Childhood Cancer Survivors](#) - The Coalition Against Childhood Cancer (CAC2) survivorship toolkit provides education and resources for childhood cancer survivors and their families.

[Education](#) - Triage Cancer provides free education on the legal and practical issues that arise after a cancer diagnosis.

[Support](#) - Gilda's Club Madison provides in-person AND virtual free emotional support, cancer education, and hope for children and adults living with any kind of cancer, and those who care for them.

There are a series of excellent resources hosted by the Wisconsin Cancer Collaborative as well.

[Wisconsin Cancer Collaborative Resource Center](#) - Find all of the survivorship related resources on our website by filtering by the keyword "Cancer Survivorship" in the Wisconsin

[Wisconsin Cancer Collaborative Survivorship Program](#) - Various resources are available, including reports, peer-reviewed publications, and resource compilations on Wisconsin-specific data and resources.

[Survivorship Chapter, Wisconsin Cancer Plan 2020-2030](#) - Strategies and action steps designed to make sure your survivorship work aligns with evidence-based practices and areas of greatest need.

WCC STAFF NEWS

Staff Change at the Wisconsin Cancer Collaborative

Dr. Noelle LoConte, institutional Principal Investigator for the Wisconsin Cancer Collaborative, is stepping away from her role to focus on new initiatives within the Carbone Cancer Center.

Dr. LoConte was chair of the Wisconsin Cancer Council (now Wisconsin Cancer Collaborative) in 2010 and became Principal Investigator for the organization in 2011.



Among her innumerable contributions to the organization, LoConte was key to the development of each of the Wisconsin Cancer Collaborative cancer plans. She has made significant contributions in cancer prevention and control, including groundbreaking work around the understanding of the link between alcohol and cancer, something that has now become a priority nationally.

Many of you have gotten to know Dr. LoConte over the years through her involvement in countless meetings and Cancer Summits. Please join us in thanking Dr. LoConte for her leadership and her many contributions to both the Wisconsin Cancer Collaborative and public health overall. Her dedication and commitment to excellence have had a profound impact on the organization.

WCC NEWS

New County Cancer Profiles Available Now

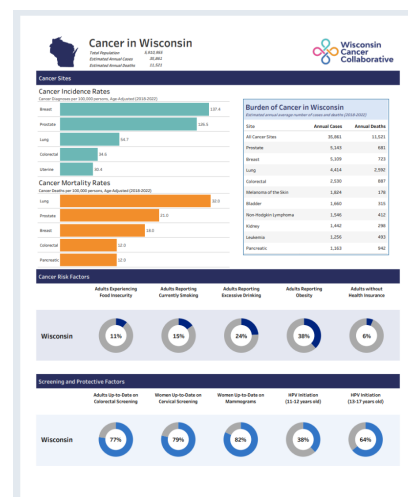
The new [Wisconsin County Cancer Profiles](#), with a specific profile for each of Wisconsin's 72 counties, are now available online.

The two-page profiles offer the opportunity to see how your county compares to statewide averages and other counties around the state. They combine data from multiple sources, such as the Wisconsin Cancer Reporting System, the Wisconsin Immunization Registry, the Behavioral Risk Factor Surveillance System, and the U.S. Census.

Each profile features dozens of data points to help illuminate the state of cancer for that county, offering a view of successes and possible areas for future improvement.

The Wisconsin Cancer Collaborative Interactive County Cancer Data Dashboard will be updated in the coming weeks as well with 2025 information.

The staff of the Wisconsin Cancer Collaborative recently delivered informational packets containing state and county cancer profiles to each member of the Wisconsin State Legislature at their Capitol offices. The packets contained information specific to each legislator's district.



WCC NEWS

Wisconsin Cancer Collaborative Regional Meeting Wrap-up

Thank you to all who attended our Spring 2025 Regional Meetings!

Both the Green Bay and Hayward meetings served as wonderful opportunities for WCC staff, members and community members together to network, learn, and connect. Slides for both meetings are available below.



[View the Slides from Green Bay](#)

[View the Slides from Hayward](#)

WCC SUMMIT NEWS

Award Nominations and Registration Now Open for September Summit

Registration and **award nominations** are now open for the 2025 Wisconsin Cancer Summit.

The Summit will be held Wednesday evening, September 24 and during the day of Thursday, September 25 at the Glacier Canyon Conference Center at the Wilderness Resort in Wisconsin Dells.



We are excited to celebrate 20 years of cancer control and prevention work in Wisconsin with our member organizations. This Summit will highlight milestones and successes throughout the coalition's history. The Summit is free, and we encourage all of our members to attend.

We are seeking award **nominations** for people and organizations whose work inspires you. The awards ceremony will take place at the Summit.

Award nominations close August 25. Award categories are:

- The **Champion Award** honors an individual who has made a significant contribution to cancer control outcomes - locally, regionally and/or statewide.
- The **Collaboration Award** honors a group of two or more organizations that have demonstrated effective teamwork in advancing cancer control goals.
- The **Health Care Hero Award** honors an individual health care worker, or a system/clinic/practice, for their exceptional dedication to serving and supporting patients while advancing the progress of public health.
- The **Impact Award** honors an organization or project that has made a significant contribution to cancer control outcomes – locally, regionally, and/or statewide.
- The **Policy Change Maker Award** which recognizes an individual who has made a significant and lasting impact on cancer prevention and control policy in Wisconsin.

[Register for the Summit](#)

[Nominate for an Award](#)

Member Orientation Webinar Coming Soon!

The Wisconsin Cancer Collaborative wants to help you get the most out of your WCC membership.

If you're new to our group, or would just like a refresher on what we do, tune in for our Member Orientation. It will be held on Thursday, **June 19** at 10:00 a.m.

It's an opportunity to learn about high-quality tools to advance your work, education and support from our outreach team, access to our members-only Networking Directory and opportunities to network and learn, in person and online.



WEBINAR
MEMBERSHIP ORIENTATION

New to the Wisconsin Cancer Collaborative? Looking to join? Long time member but need a refresh on what our membership offers?

Please join us for a member orientation webinar where we will cover the many benefits of our free WCC Membership.

DATE
June 19, 2025

TIME
10:00 - 11:00 AM

www.wccancer.org/events/webinars

REGISTER NOW

**Register
Now!**

MEMBER SPOTLIGHT

Camp Kesem Relies on Volunteer Enthusiasm

Kesem is the leading national nonprofit supporting children facing a parent's cancer. Founded in 2000, the Kesem community consists of more than 4,700 volunteer college student leaders at more than 115 college chapters across the country, including one at the University of Wisconsin-Madison.

Kesem at UW-Madison was founded in 2010 and serves children aged 6-18 throughout Wisconsin and northern Illinois. Most of the children they serve are in the Madison and Milwaukee areas, but they are hoping to serve a larger population from northern Wisconsin. They provide free summer camps, day programs, and virtual meetups for youth and adolescents facing a parent's cancer to connect with peers, process their experiences, and have fun.

The Wisconsin group is run by passionate college students hoping to make a difference for children affected by a parent's cancer. They create experiences and connections for children to process, connect, heal, and thrive. They believe all children facing a parent's cancer deserve the chance to fully experience the joys of childhood and be their best selves.

Their flagship project is a free summer camp, with three sessions offered each summer. For many children and volunteers, Kesem is a life-changing experience that spans far beyond a week at summer camp. It fosters bonds and understanding that builds resilience, confidence, and lasting feelings of hope and joy.

This year's camp dates are June 22-27, July 20-25, and August 10-15. Kesem also offers kids events throughout the year, such as Virtual Cabin Chats, and a Friends and Family Day in the Spring and Fall.

Kesem and its services are available for children at any point in their caregivers' cancer journey. All their services are provided at no cost to families. Additionally, they provide extra support including assisting with transportation to and from camp, providing supplies and clothing, or any other accommodations that families need to reduce barriers to attending camp. Campers are also able to receive Kesem year-round support services without attending a week of camp in the summer.





Partner Announcements

A short list of funding opportunities, calls for proposals and other news from our members and partners.

To submit an announcement for an upcoming newsletter please [email us](#).



VIRTUAL TRAINING

Community Health Worker Training: Insurance and Finances 101

[View the
Flyer](#)

Triage Health, a program of Triage Cancer, is providing a free virtual training from 10:00 a.m. to 2:30 p.m. on **June 25** for community health workers (CHW), promotores, patient navigators, and other front line public health workers. This training provides an introduction to choosing and using health insurance, workplace rights to take time off to access health care, disability insurance, and strategies for managing medical bills. All are welcome.

[Register](#)

ECHO PROGRAM

ACS Develops ECHO Program for Advanced Breast Cancer

[Register](#)

The American Cancer Society has developed an ECHO (Extension for Community Health Outcomes) program to address best practices in shared decision-making and high-quality treatment of advanced breast cancer. The target audience is interdisciplinary clinical care teams (clinicians, physicians, nurses, navigators, social workers, etc.). It began in May and will go through November and will cover sequencing of systemic therapy in locally advanced and metastatic breast cancer. The program is open to all.

AWARDS

Wisconsin BigShot Awards Announced

[View the
Award
Winners](#)

The Wisconsin Department of Health Services (DHS) has announced its annual Wisconsin BigShot awards, celebrating 90 Wisconsin health care providers for protecting children's health. The providers ensure children are up to date on childhood and/or adolescent vaccinations, which include hepatitis B and HPV vaccines as cancer prevention tools.

WEBINAR SERIES

AYA Webinars Focus on Detection, Care and Support

[Register](#)

The Wisconsin Association of Hematology and Oncology is hosting an **AYA (Adolescent and Young Adult) webinar series**. This series explores evidence-based strategies to improve early detection, care coordination, and long-term support for AYA patients and is designed for health care professionals. There are two webinars scheduled:

- Improving Early Cancer Detection in the AYA Population: Strategies for Screening, Risk Assessment, and Provider Engagement, Tuesday, **June 24**, 4:30-5:30 p.m., and
- It Takes a Village: Multidisciplinary and Community-Based Approaches to Supporting AYA Patients Across the Cancer Continuum Wednesday, **July 9**, 3:00-4:00 p.m.

Resources and Reports

STUDY

Stool-Based DNA Colorectal Cancer Screening Study in Wisconsin

[Read the Study](#)

A recent study looked at focus groups of Black/African American participants to understand their perspectives of the acceptability of various colorectal cancer screening options. The focus groups were conducted at two federally qualified health centers in Milwaukee.

Overall knowledge regarding risk of colorectal cancer was low, and there was limited awareness about stool-based DNA testing. Most respondents preferred colonoscopy, but were open to other screening tests. Stool-based DNA tests were more preferred among younger participants, but were acceptable across all groups. This study demonstrates the need for more education on colorectal cancer screening options and shared decision-making conversations with primary care providers.

SURVEY

2025 Early Detection Survey Results

[Read the Press Release](#)

The Prevent Cancer Foundation conducted the 2025 Early Detection Survey asking participants about routine medical appointments and cancer screenings. Concerningly, the survey results found only 51% of U.S. adults 21 years and older said they had a routine medical appointment or routine cancer screening in the last year, which is a 10-percentage point drop from the **2024 survey**.

[Read the Survey Results](#)

Not knowing they need to be screened (43%), not having any symptoms of the disease (40%), and not having a family history of the disease

(40%) were common reasons for not having cancer screenings, which is consistent with the 2024 findings. But this year's findings also found 1 in 7 U.S. adults are behind due to skepticism of the health care system. Mammograms were the highest screening and other routine screenings trail behind. More work is needed to get people screened for cancer to lead to better health outcomes.

TOOL

New Cancer Risk Assessment Tool

[View the Tool](#)

The American Cancer Society has launched a new cancer risk assessment to help individuals understand personal cancer risk factors and steps to reduce risk.

The tool allows users to evaluate their cancer risk by looking at:

- Genetic Risk
- Family History
- Screening
- Daily Life Factors

The assessment takes about five minutes.

REPORT

Lifelong Chronic Health Risks Model for Childhood Cancer Survivors

[Read the Article](#)

A recent study created a model to estimate lifetime risk of eight health conditions for childhood cancer survivors (diagnosed between 1970 - 1999 with a five-year survival or more) compared to the general population, stratified by radiation exposure. The study found that survivors of childhood cancer experience accelerated onset of aging-related diseases, regardless of radiation history. This illustrates the importance of preventative health screenings and interventions preferably years before the general population.

[Read the Journal Article](#)

Article may be behind a paywall

Upcoming Events

WEBINAR

HPV and the Burden of Cervical Conization

June 12
11:00 - Noon

Understand the prevalence of certain-HPV related cancers and vaccination trends, highlight strategies for helping to improve vaccination rates in adolescents and understand the economic implications of cervical conization in young and mid-adult women.

[View the Flyer](#)

Hosted by the American Cancer Society and Mission HPV Cancer Free

[Register](#)

WEBINAR

Integrative Approaches to Food Choice

June 16
6:00 - 7:30 p.m.

Explore integrative food choice approaches to deal with side effects and potentially improve cancer outcomes.

[Register](#)

Hosted by Gilda's Club Madison

PROVIDER TRAINING

Addressing Vaccine Hesitancy

June 17
1:00 - 2:00 p.m.

Explore effective strategies for understanding and addressing vaccine hesitancy in clinical and community settings.

[Register](#)

Hosted by Immunize Wisconsin

WEBINAR

Comprehensive Cancer Coalitions and the Evolving Landscape of Cancer Survivorship

June 17
2:00 - 3:00 p.m.

Learn about new standards for survivorship care and how comprehensive cancer coalitions can improve the integration of survivorship-focused work into their cancer control plans and initiatives.

[View the
Flyer](#)

Hosted by the American Cancer Society

[Register](#)

WEBINAR

Building Trust to Increase Participation in Clinical Trials

June 18
3:00 - 4:00 p.m.

Explore the critical role of clinical trial participation in cancer research and learn about how building trust can help enhance engagement and participation.

[View the
Flyer](#)

Hosted by the American Cancer Society

[Register](#)

WEBINAR

Sexual Health for Cancer Survivors

June 25
1:00 - 2:00 p.m.

Learn about sexual dysfunction as a side effect of cancer treatment and reducing stigmas relating to discussing sexual health in a cancer care setting.

[Register](#)

Hosted by Kohl's Healthy Families and the American Cancer Society

WEBINAR

Navigating Health Care: How to Plan Ahead

June 26
Noon - 1:30 p.m.

This session will explore these different types of health care services: palliative care, home healthcare, long-term care, and advance care planning.

[Register](#)

Become Part of the Wisconsin Cancer Collaborative

Not a member? Joining the Wisconsin Cancer Collaborative is free. We connect you with tools, support, and expertise to help you make the greatest impact.

[Become a Member](#)



© 2025 Board of Regents of the University of Wisconsin System

Reducing the burden of cancer for everyone.

www.wicancer.org



Wisconsin Cancer Collaborative | 610 Walnut Street Rm 330, WARF Building, | Madison, WI 53726
US

[Unsubscribe](#) | [Constant Contact Data Notice](#)



Try email marketing for free today!