

Sharing cancer research with communities: lay abstracts at Carbone Cancer Center

Bird J, PhD; Turany M, MS; Dahlke A, MPH; LoConte NK, MD, FASCO

Background: Who We Are

Carbone Cancer Center's Community Outreach and Engagement Team (COE)

Mission: reduce cancer and health disparities through research integrated with community outreach and engagement across Wisconsin

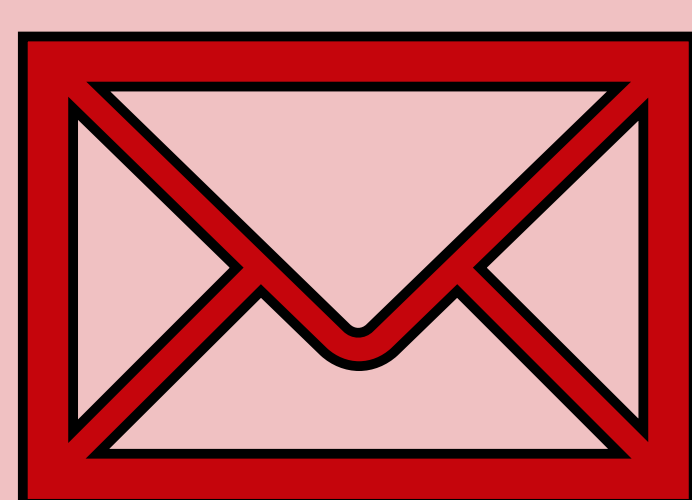
Overview and Goals

Communicate new cancer research to our community

Create relationships between communities and cancer research teams

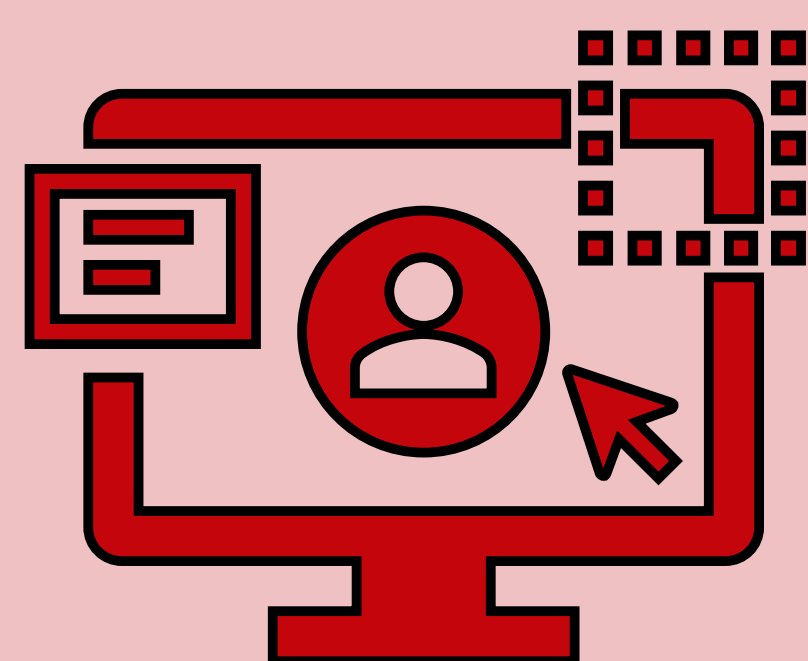
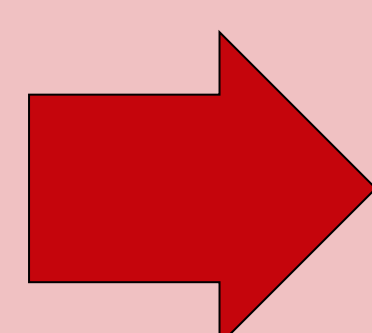
Share findings beyond the university

Activities: Lay Abstract Process



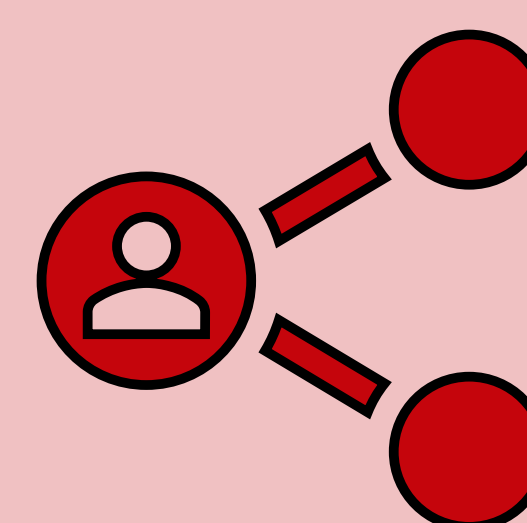
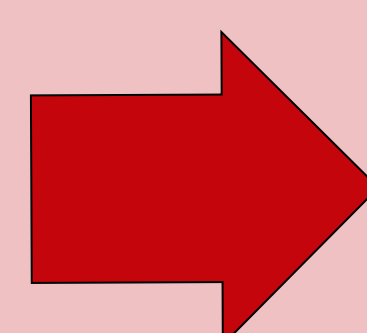
Request

COE email to researcher
Researcher Qualtrics form submission



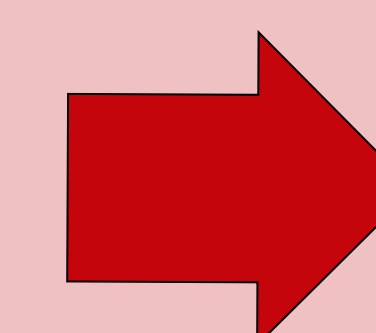
Create

COE drafts lay abstract using plain language best practices
Researchers help to finalize



Disseminate

COE website
UW Extension
COE Community Advocacy Boards
Community partners and events



Evaluate

Researcher feedback on process and intended use
Community partner feedback on use

Recent Outcomes

9 lay abstracts created May – August 2024

8 shared on our website

5 of 5 researchers agree that **the process was simple and useful**

Researchers felt it was most important that abstracts accurately described their research, but were less concerned about sharing abstracts beyond the university

Lay Abstract Partners

Carbone Cancer Center researchers

UW Extension

Statewide and African American Community Advocacy Boards

Scan for Lay Abstracts



Carbone Cancer Center

UNIVERSITY OF WISCONSIN
SCHOOL OF MEDICINE AND PUBLIC HEALTH