



News from the Wisconsin Cancer Collaborative | August 2024

WCC SUMMIT NEWS

**Don't Forget to Register for the 2024 Wisconsin Cancer Summit!**

**September 25-26, 2024  
Milwaukee Marriott West  
Waukesha, Wis.**

The 2024 Wisconsin Cancer Summit will foster new ideas and create lasting partnerships. This is an opportunity to share stories, learn something new, and network with partners across the state!

- **Sept. 25 | 5 p.m. - 7 p.m.**  
Networking reception & program.

- **Sept. 26 | 8 a.m. - 4 p.m.**  
All-day sessions featuring pediatric cancer specialists, community health educators, and a networking poster session.

As always, the Summit is free, and we encourage all of our members to attend.

**BUILDING  
CONNECTIONS**

2024 Wisconsin  
Cancer Summit



**SAVE THE DATE**



Wednesday | September 25  
Thursday | September 26



Milwaukee Marriott West  
W231 N1600 Corporate Ct.  
Waukesha, WI 53186



FOR QUESTIONS:  
www.wiscancer.org  
info@wiscancer.org



[Register for the  
Summit](#)

[View the Agenda](#)

## Register For Our New Summit Poster Networking Session

Share your work with your colleagues through a poster at the 2024 Wisconsin Cancer Summit. It's an easy and free way to network and let others know about your successes.

Presenters will have the opportunity to stand next to their posters and talk about their projects. During the 45-minute session poster, presenters will stay near their posters so other attendees can learn and ask questions.

To participate, you or your organization will design a poster that is either 36 wide by 40 inches tall, or 36 inches wide by 43 inches tall. Please make sure images and text are clear and legible. You can print your poster, or we can print it for you.

The session runs from 11:15 a.m. - noon on Thursday, September 26.

[Register for the Poster Session](#)

## Summit Hotel Room Details

A group of hotel rooms has been set aside for the Summit. To reserve a room through the room block, please call the Milwaukee Marriott West in Waukesha at 877-651-7666 and mention the Wisconsin Cancer Collaborative. Reservations must be made on or before **September 4**.

## Member Survey Now Open

A reminder that our Wisconsin Cancer Collaborative **2024 Member Survey** is now open.

Every two years, we use this **survey** to find out how well we're meeting your needs and how we can improve our programs, resources, and member support.

The **survey** is anonymous and takes about 10 minutes to complete. If you've already taken it, thank you! And if you haven't, we invite you to take it today.

Thank you for being an important part of the Wisconsin Cancer Collaborative.

## WCC Welcomes New Staff Member

The Wisconsin Cancer Collaborative is pleased to introduce our newest staff member, Olivia Steidl (*she/her/hers*). Olivia supports WCC's work in cancer risk reduction and end of life care.

Olivia received her Master of Public Health from the University of Wisconsin-Madison. During her professional program, she worked at University Health Services designing and promoting a vaping prevention campaign geared towards undergraduate students and as a teaching assistant for an undergraduate public health course.



Most recently, Olivia worked as a Prevention and Harm Reduction consultant at Public Health Madison and Dane County, conducting an environmental scan and

developing a policy overview focused on hemp derivative products sold throughout Dane County.

In her free time, Olivia loves reading, gardening, and playing board games.

Please join us in welcoming Olivia!

---

## WCC CANCER PLAN NEWS

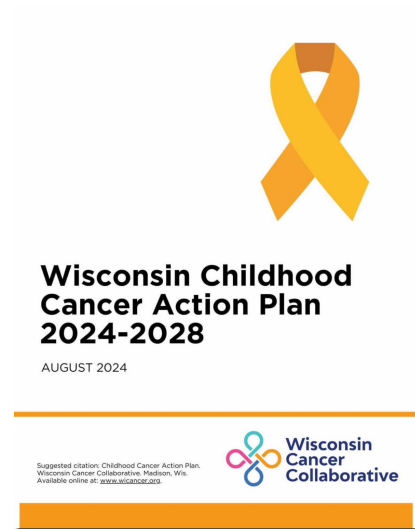
### Introducing the Childhood Cancer Action Plan 2024-2028

The Wisconsin Cancer Collaborative is proud to announce the release of our Wisconsin Childhood Cancer Action Plan 2024-2028. This Childhood Cancer Action Plan aims to fill the gaps found within the awareness, education, and care given to those with cancer as children. The Action Plan also addresses the long-term physical, psychological, and psychosocial impacts cancer has on patients throughout their lifetime, and on their families, support systems, and care teams.

We invite anyone in Wisconsin to engage in the action steps in this document. We invite you to keep us updated on your progress by contacting us at [info@wicancer.org](mailto:info@wicancer.org). We also indicate action steps the Wisconsin Cancer Collaborative plans to lead.

View our full Wisconsin Cancer Plan 2020-2030, which includes updated action steps that include pediatric and adolescent and young adult cancer: <https://wicancer.org/cancer-plan/interactive/>

[View the Action Plan](#)



---

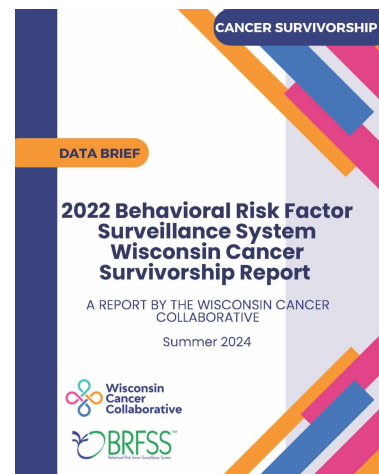
## DATA BRIEF

### New BRFSS Report Available

In 2022, the Behavioral Risk Factor Surveillance System (BRFSS) surveyed cancer survivors in Wisconsin about their survivorship experiences. A new data brief summarizes the BRFSS findings and identifies opportunities to improve future surveys.

Key points include:

- 1,253 cancer survivors were surveyed in Wisconsin about their experiences, representing a doubling of the 2020 sample size.
- An estimated 14.7% of Wisconsin adult cancer survivors have physical pain caused by their cancer or cancer treatment.
- Continued efforts are needed to improve representation from all racial groups, cancer types, LGBTQ+ populations, and other populations, so that data can better represent the survivorship experiences of all people in Wisconsin.



[View the Data Brief](#)

---

# Partner Announcements

A short list of funding opportunities, calls for proposals and other news from our members and partners.

To submit an announcement for an upcoming newsletter please [email us](#).



---

## DATA RELEASE

### Latest Wisconsin Cancer Incidence Surveillance Data Released

The latest Wisconsin cancer incidence surveillance data were just released in the [Cancer in North America \(CiNA\) Explorer](#) application. With CiNA Explorer, you can create custom graphs and tables, download data and images, and share links to your results using statewide Wisconsin cancer data for free.

The application's latest version also added:

- Five-year rates for pediatric cancer sites. Sites by [International Classification of Childhood Cancer \(ICCC\) site recode](#) are available in the 'Choose a Cancer Site' dropdown list below the standard site recode groups within the application.
- Additional adult cancer sites. You can now explore data by Obesity Associated, Alcohol Associated, and Physical Inactivity Associated sites.
- New 2017-2021 dataset. You can now explore all U.S. and Canadian incidence data submitted to NAACCR in December 2023 for the last five years of available data.
- Select mortality statistics for U.S. Combined and individual U.S. states. Mortality, when available, can be accessed in the controls on the left side of the application under the 'Incidence/Mortality' heading.

To explore other free, online applications the Wisconsin Cancer Reporting System supports, visit their [Statistics and Publications page](#). If you have any issues navigating CiNA Explorer or other public portals, reach out to WCRS at [DHSWCRSDataRequests@dhs.wisconsin.gov](mailto:DHSWCRSDataRequests@dhs.wisconsin.gov) for technical assistance.

[Visit the CiNA Explorer](#)

[Visit the Statistics and Publications page](#)

[Email DHS Technical Assistance](#)

---

## RESOURCE

### Back to School Immunization Toolkit

The Public Health Foundation (PHF), in collaboration with the Centers for Disease Control and Prevention (CDC), has developed a toolkit for education professionals. HPV and hepatitis B vaccine are important cancer prevention tools.

The toolkit is entitled Ways Schools Can Support Routine Vaccination Catch-Up Among School-Aged Children.

[Visit the PHF Site](#)

[Download the Toolkit](#)

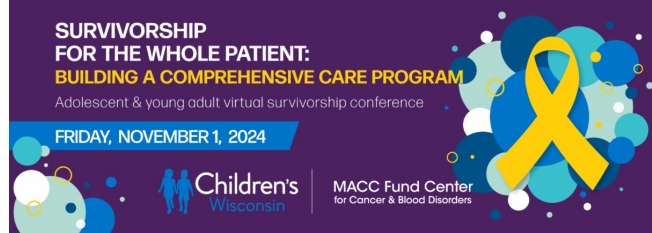
---

## CONFERENCE

### Adolescent and Young Adult

## Virtual Survivorship Conference

Children's Wisconsin will be hosting a virtual adolescent and young adult survivorship conference "Survivorship For the Whole Patient: Building A Comprehensive Care Program" on Friday, November 1, 2024. Registration is open and there is no cost to attend this conference. CME credit for this activity costs \$25 plus a processing fee. Join other multidisciplinary health care professionals and researchers in oncology, as well as patients and patient families, as they focus on how transitions impact care and quality of life for cancer survivors.



[Register](#)

### AWARENESS ACTIVITY

## Go Gold in September to Increase Awareness of Childhood Cancer

This September, the Coalition Against Childhood Cancer (CAC2), invites you to participate in the [Gold Awareness Project](#). The Gold Awareness Project offers people creative ways to promote the color gold in September to increase awareness of childhood cancer. Consider asking prominent structures, buildings, businesses, or municipal landmarks to “go gold”, ask people to wear gold, requesting proclamations and/or joining in raising awareness in whatever way you can.

[Visit the Gold Awareness Project](#)

### IMMUNIZATION

## Back to School Immunization Event

The Dane County Immunization Coalition (DCIC) is back for another year of working with local partners to provide vaccine education, childhood immunizations to **any** child five and older, and a voucher for a free pair of shoes for children who receive a vaccination at the “Back 2 School Free Haircutz” event hosted by JP Hair Design. The 16th annual event will be held on Sunday, August 25, 10 a.m.- 4 p.m. at the Alliant Energy Center in Madison and will bring together more than 30 barbers to provide free haircuts to children entering grades K-12, with a goal of providing 1,000 free haircuts.

In addition to vaccines, DCIC will distribute vaccine educational materials to parents/guardians of children attending the event, and be available to answer questions.

[Volunteer](#)

## Resources and Reports

### RESOURCE

## HPV Cancer Awareness Toolkit

August is National Immunization Awareness Month. The GW HPV Cancer Awareness toolkit provides easy to use downloadable social media posts.

[View the Resource](#)

## RESOURCE

### National Standards for Survivorship Care

[View the Standards](#)

The National Cancer Institute (NCI), in partnership with the Department of Veterans Affairs (VA) and other Health and Human Services Agencies, led a consensus-building process with subject matter experts to develop the National Standards for Cancer Survivorship Care.

This collaboration defined standards for policy, process, and evaluation for survivorship care. The effort was undertaken as part of the Biden Cancer Moonshot. These are voluntary standards anybody involved in care of cancer survivors can utilize. There are a series of short videos below the standards that provide overviews and answer questions.

## STUDY

### Large Number of Cancer Cases and Deaths are Due to Potentially Modifiable Risk Factors

[Read the Study](#)

A recent study found that in the United States in 2019, an estimated 40 percent of all cancers (excluding nonmelanoma skin cancers) and 44.0% of all cancer deaths in adults aged 30 years and older were attributable to potentially modifiable risk factors.

Study may be behind a paywall

Risk factors included: cigarette smoking; second-hand smoke; excess body weight; alcohol consumption; consumption of red and processed meat; low consumption of fruits and vegetables, dietary fiber, and dietary calcium; physical inactivity; ultraviolet radiation; and seven carcinogenic infections. Cigarette smoking was the leading risk factor followed by excess body weight, and alcohol consumption. Alcohol consumption contributed to 5.4% of cases and 4.1% of deaths. The study highlights the importance of equitable prevention work.

## ARTICLE

### FDA Approves New Self-Collection Option for HPV Testing

[Read the Article](#)

The Food and Drug Administration has approved a new self-collection test to detect human papillomavirus (HPV) and identify women at risk for cervical cancer.

The test is to be used in healthcare settings, where the patient collects their own vaginal sample without the need for an invasive pelvic exam.

## STUDY

### New Study: Federally Qualified Health Centers Have Lower Cancer Screening Rates

[Read the Study](#)

A recent study in *JAMA Internal Medicine*, showed that all cancer screenings were lower in federally qualified health centers (FQHCs) nationally and across states. The lowest cancer screening was for colorectal cancer screening, indicating opportunities for self-collected stool-based tests when the person is eligible and willing.

[Read the Helio Article](#)

It's important to note that this indicates opportunities to increase

Study may be

screening opportunities, while also acknowledging that FQHCs can serve underserved communities regardless of their ability to pay, develop trust with their patients, and help address many barriers their patient populations are facing.

*behind a paywall*

## Upcoming Events

VACCINATION CLINIC  
**La Crosse Back2School School Supply and Vaccination Clinic**

*Hosted by Back2School sponsors*

**August 6, 7 & 20**  
Times and locations vary by date

[Learn more](#)

WEBINAR  
**Barriers to Treatment**

*Hosted by the American Cancer Society*

**August 21**  
3:00 p.m. - 4:00 p.m.

[Register](#)

WEBINAR  
**National Roundtable on Cervical Cancer National Meeting Public Session**

*Hosted by the American Cancer Society*

**August 22**  
10:00 a.m. - 4:00 p.m.

[Register](#)

WEBINAR  
**Triage Cancer: Maximizing Employee Benefits**

*Hosted by Triage Cancer*

**August 27**  
Noon - 1:30 p.m.

[Register](#)

### Become Part of the Wisconsin Cancer Collaborative

Not a member? Joining the Wisconsin Cancer Collaborative is free. We connect you with tools, support, and expertise to help you make the greatest impact.

[Become a Member](#)



# Reducing the burden of cancer for everyone.

[www.wicancer.org](http://www.wicancer.org)



Wisconsin Cancer Collaborative | 610 Walnut Street Rm 370, WARF Building, | Madison, WI 53726  
US

[Unsubscribe](#) | [Constant Contact Data Notice](#)



Try email marketing for free today!