

Social Determinants of Health Data:

A First Step in Adopting a Health Equity Lens to Data Analysis



Chelsea Robinson (She/her)
Social Determinants of Health Epidemiologist
Division of Public Health (DPH)
Chelsea.Robinson@dhs.wisconsin.gov

November 2, 2023

What Will We Cover Today?

- Define social determinants of health (SDoH)
- Use SDoH data to tell better stories
- Discuss DPH efforts to improve SDoH data infrastructure

Social Determinants of Health (SDoH) Are...

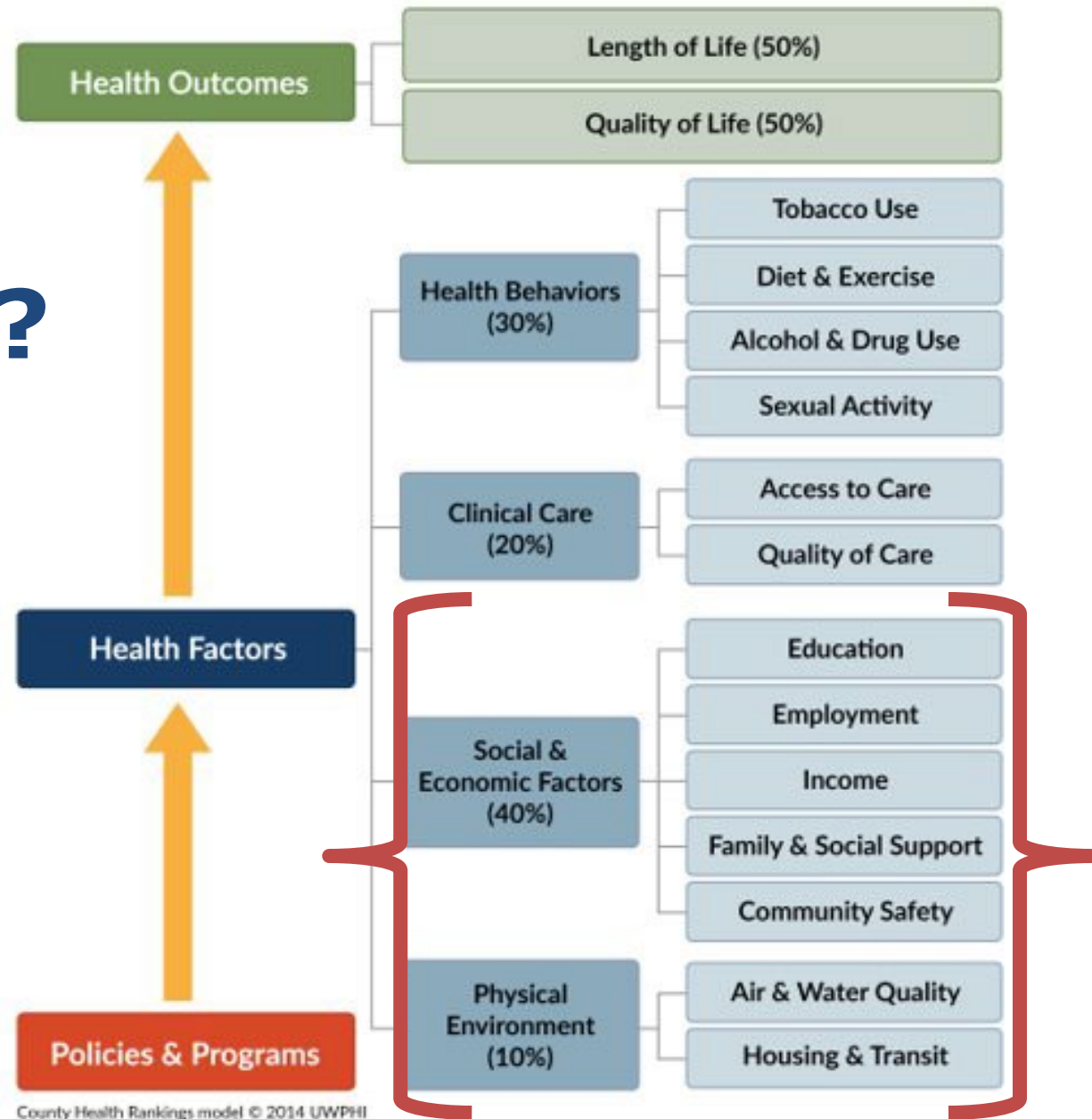
Non-medical factors
that influence health

Conditions people are
born, grow, live,
work, and age

Wider set of forces and systems that
shape conditions

Why Are SDoH Important?

SDoH explains ~50% of health outcomes



Data Is Critical for Telling This Story.

In public health, we rely on data for our stories.

Data can be...

- Numbers.
- Images.
- Quotes.

In order to tell a SDoH story, we need SDoH data.

DPH SDoH Data Efforts

Goal 1: Create a comprehensive database of granular SDoH data

- Includes secondary data
- Defines geographic specificity
- Defines demographic specificity

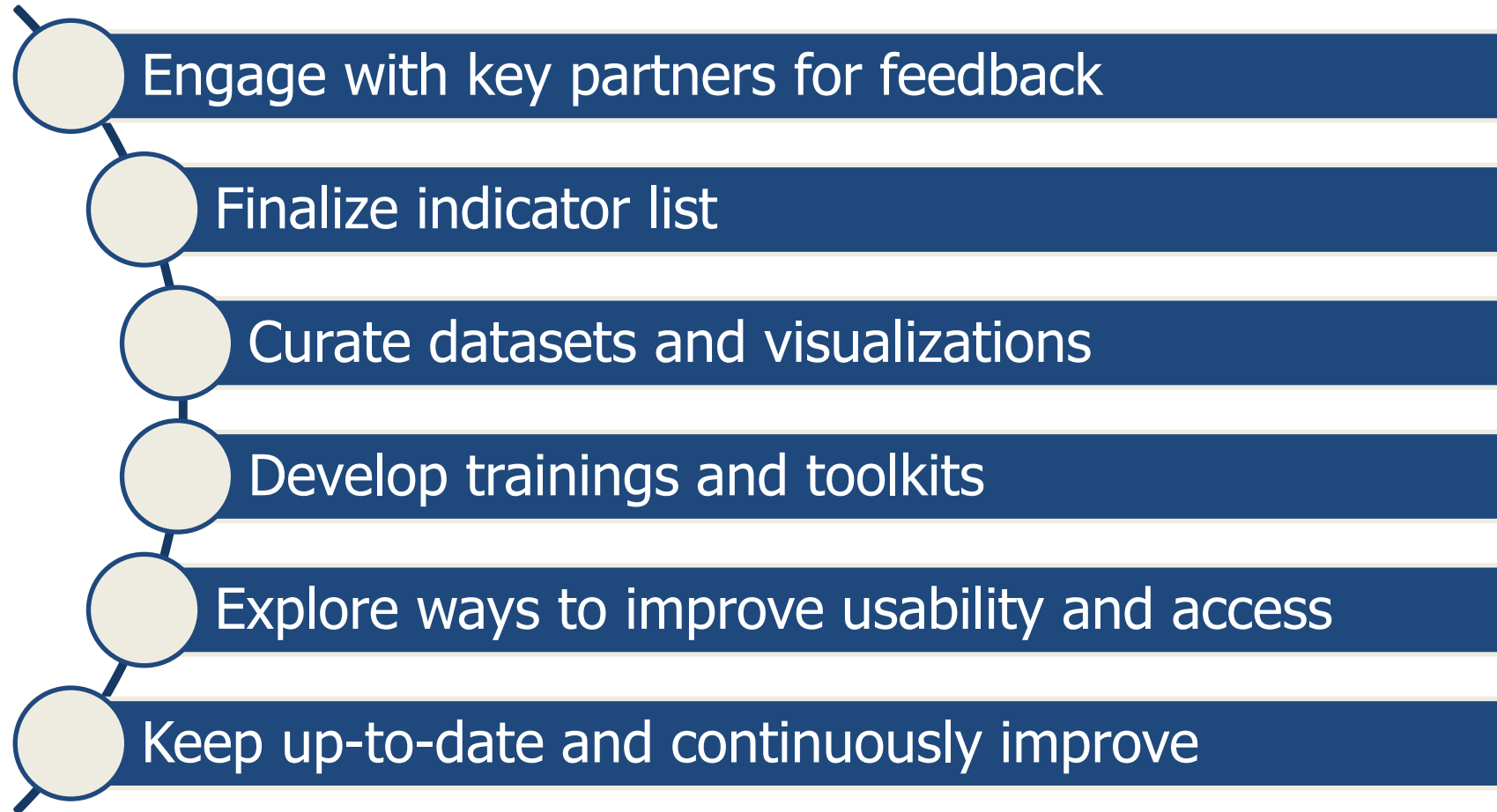
Goal 2: Increase collection of SDoH data

Goal 1: Create a SDoH Database

Indicator list: 158
total indicators

Sub-section (Number)
Law and policy (7)
Access to decision making (2)
Economics and employment (32)
Education (13)
Housing (20)
Child care (7)
Food access and security (5)
Recreation and exercise access (1)
Internet access (7)
Transportation (11)
Health insurance (3)
Health care access and quality (21)
Social support (7)
Safety (11)

Create a SDoH Database: Next Steps



How Can This Database Be Used?

Link to program data (by geography) to conduct analyses

Pull numbers to use in narrative reports



Goal 2: Increase Collection of SDoH Data

Behavioral Risk Factor Survey added SDoH questions in 2022.

- Material hardship
- Social and emotional support
- Food security
- Transportation
- Chronic stress

Family Health Survey added some SDoH questions in 2022.

- Paid sick leave access

How Can This Data Be Used?

Cross-tabulate SDoH data by health behavior or outcome data

Conduct association analyses



Tips for Telling Your SDoH Story!

Ground the narrative in community voice.

- Leverage qualitative insights.

Choose a few meaningful indicators.

- You don't need as much data as you think!

Double check!

- Does the narrative resonate with community?

Questions?

Feel free to email with any ideas, questions, or feedback.
Chelsea.Robinson@dhs.Wisconsin.gov