

NFLLinks to Care Community Grants

November 2, 2023



Every cancer. Every life.



N.E.W. Community Clinic and Bellin Health



“Achieving the aim of high-quality care that includes appropriate screening, timely follow-up, multimodal treatment, supportive care, and survivorship care requires well-coordinated approaches to care delivery.

Screening is a process, not a singular event, that requires coordination, communication, and cooperation across multiple clinicians, patients, caregivers, and payers.

Breakdowns in this process can inhibit or delay follow-up, may result in duplicative or unnecessary testing, and create needless distress for patients and their loved ones.

Lack of follow-up can also perpetuate disparities in receipt of timely, high-quality care, as well as disparities in cancer-related mortality among minority and underserved populations.”

NFLLinks to Care Community Grants Project

NFL Links to Care Community Grants

The NFL Links to Care Community Grants Project aims to improve outcomes for people at risk for breast cancer who are served by community health centers.

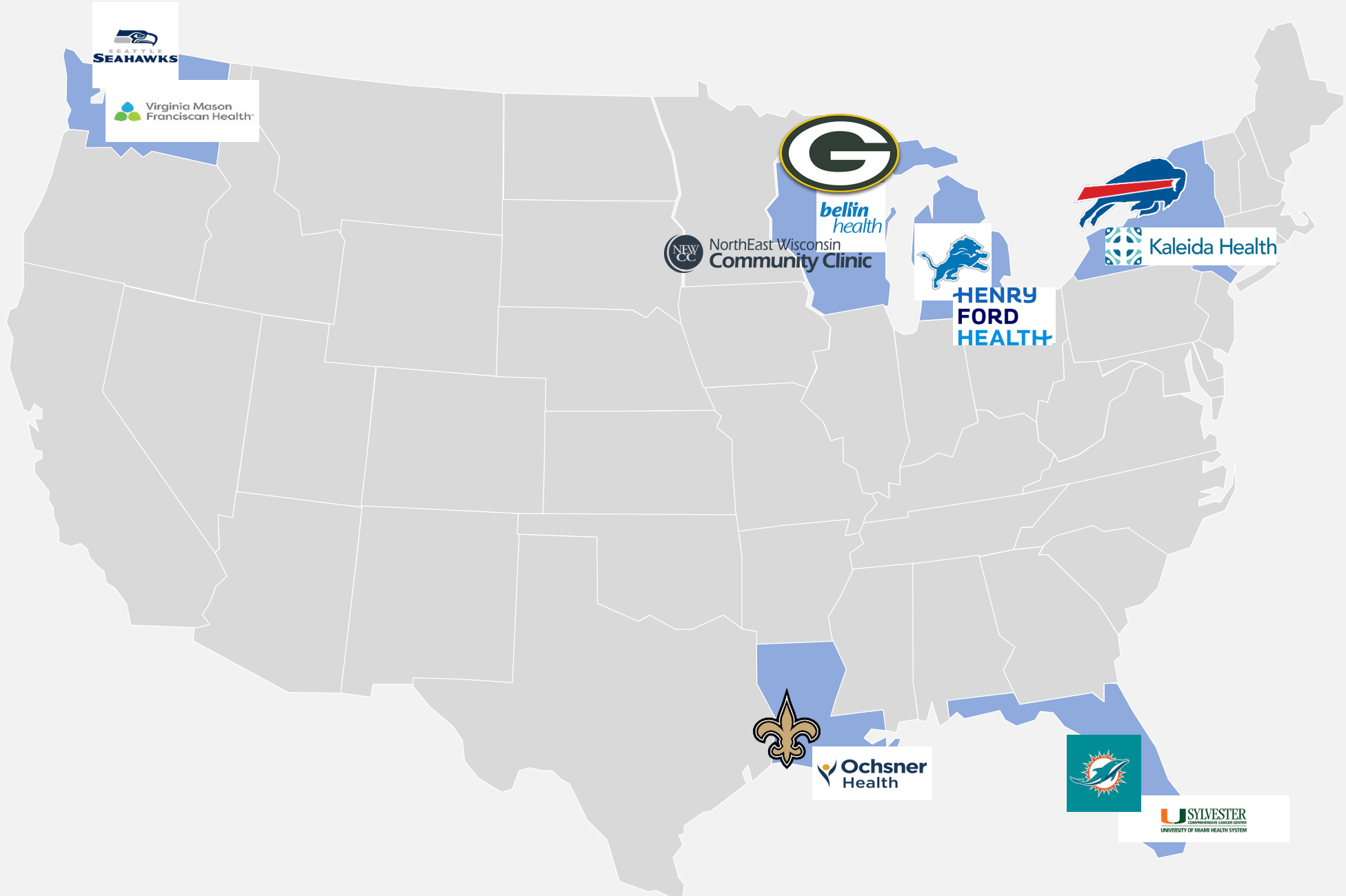
Patients of community health centers rely on hospitals to provide mammograms, diagnostic procedures, and/or cancer treatment. This project will create connections between the community health centers and NFL affiliated hospitals to ensure that patients complete their needed screenings, follow-up care, and treatment in a timely manner.

Success will be dependent upon a strong partnership between both organizations to assess the current relationship between the two systems and develop an action plan using evidence-based practices to improve referral/follow up processes and existing challenges.



NFLLinks to Care Community Grants Project

Partners and Objectives



SEATTLE
SEAHAWKS



Virginia Mason
Franciscan Health



belin
health



NorthEast Wisconsin
Community Clinic



**HENRY
FORD
HEALTH**



Kaleida Health



Ochsner
Health



U SYLVESTER
COMPREHENSIVE CANCER CENTER
UNIVERSITY OF MIAMI HEALTH SYSTEM

NFL Links to Care
Community
Grants

Project
Objectives

Building connections between community health centers and hospitals to ensure that patients complete their needed screenings, follow-up care, and treatment in a timely manner.

Increase breast cancer screening rates and timely follow-up care

Secure leadership support from community health center and NFL affiliated hospital

Strengthen medical neighborhood collaborations

Implement QI tools to strengthen processes and ensure eligible patients receive breast cancer referrals and are navigated through screening completion and follow-up when needed

Use data to inform all aspects of the project

Execute sustainable and meaningful process improvements



NFL Links to Care Community Grants

Partner Roles

ACS Staff Partner	Convener/ Coach, Project management, QI Support
Hospital	Improve screening completion process, time to follow up care, and communication of results and treatment plans to referring provider(s).
Community Health Center	Improve overall screening rates, referral processes, and communication with hospital partner.
Interventions Team	Data Tracking/ Reporting , TA to ACS staff leads, convene best practice calls with FQHCs & hospitals, NFL and ACS leadership liaison



Why Links to Care?

NFL Links to Care Community Grants

Why Links to Care?

Mammography

Early detection through mammography screening can reduce mortality from breast cancer. (1)

The Problem

A similar pattern of excess late-stage disease is observed in some groups of Hispanic, Native-American, Asian, and low-income women, particularly those who are immigrants or less acculturated, presumably due to less access to screening. (2)

The Problem

Successful breast cancer screening relies on timely follow-up of abnormal mammograms. Delayed or failure to follow-up abnormal mammograms undermines the potential benefits of screening and is associated with poorer outcomes. (3)

Major Barriers

Fear was the most prominent and prohibitive barrier to screening mammography. However, transportation and no paid time off were the most significant barriers to timely breast cancer screening. (4)

This Project

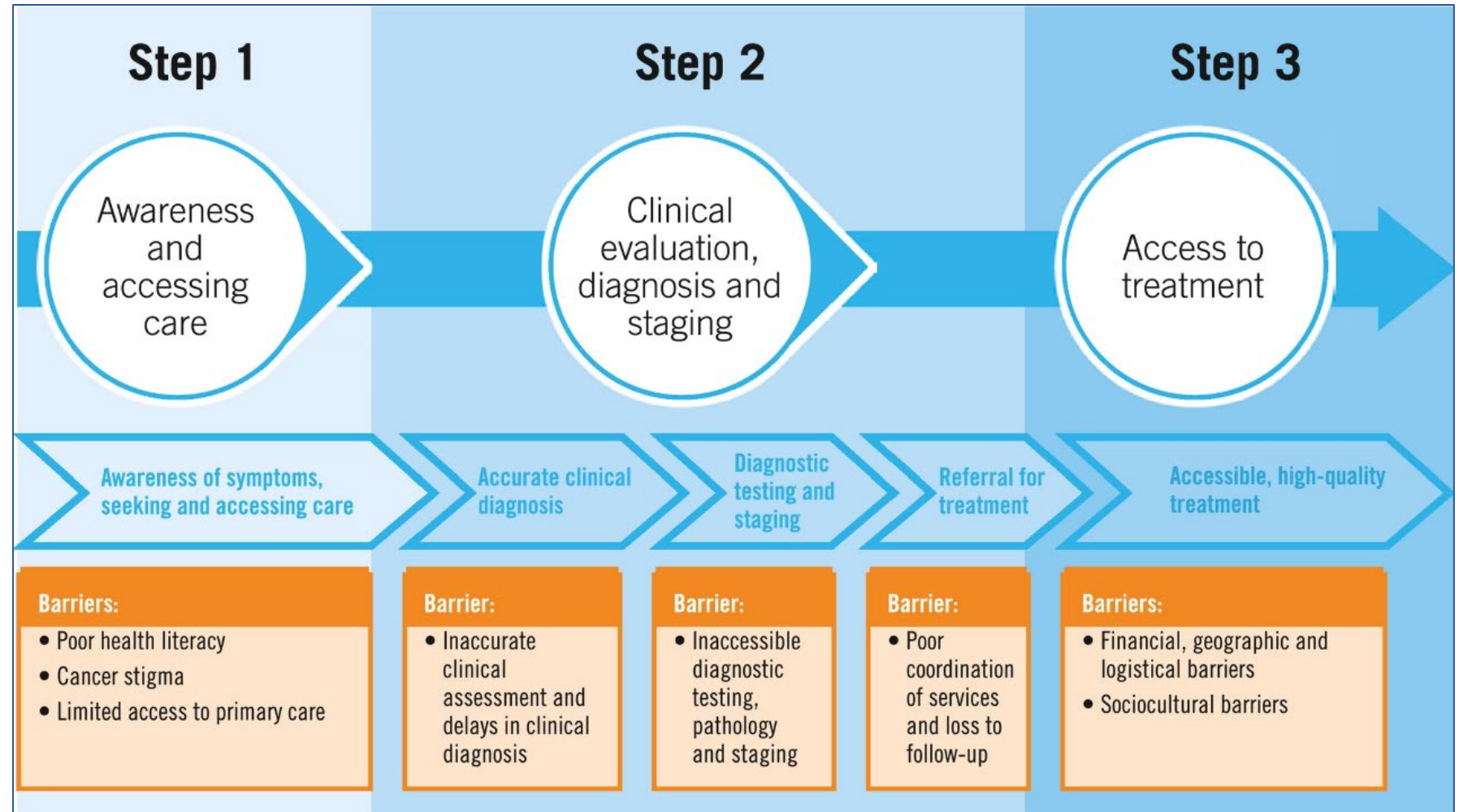
How can this partnership improve timely breast cancer screening, diagnostic testing, and treatment for low-income people?



NFL Links to Care Community Grants

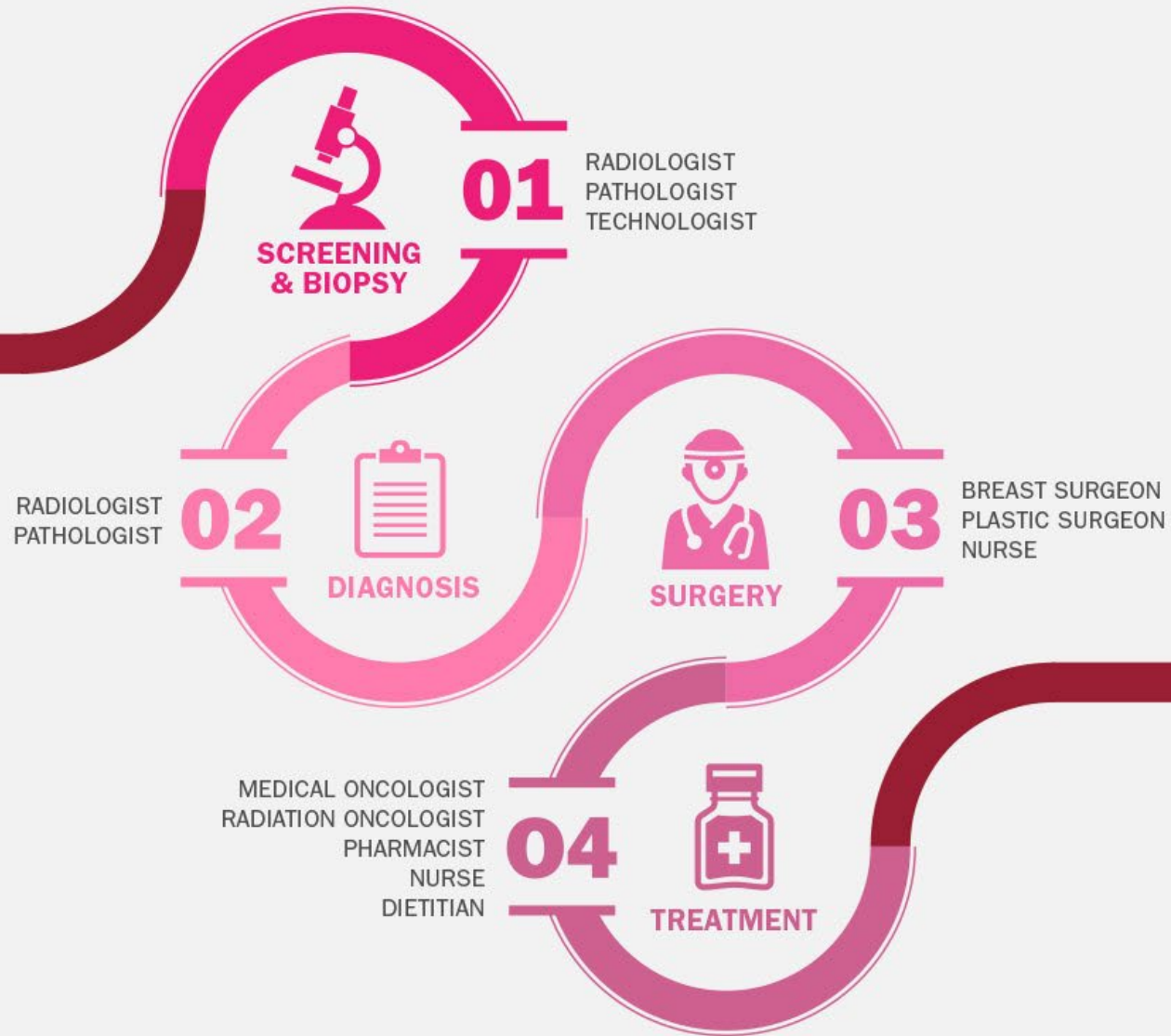
Why Links to Care?

If a screening program, however well intentioned, is introduced into a health care system that is not equipped to refer, diagnose, and treat the abnormalities it detects, then the program will not succeed and may be counterproductive.



THROUGHOUT THE JOURNEY

During your journey, a large team of specialists will support your care and treatment. Our nurse coordinators will manage the process for you, helping to communicate, organize, and provide information each step of the way, so you can focus on healing.



NFL Links to Care Community Grants Project

Progress to Date

NFL Links to Care Community Grants

Progress to
Date

Kick Off – April
21, 2023

Action Planning
Meetings

Developed Aim
statement

Baseline Data
via REDCap

Monthly Team
meetings

Process
mapping



NFL Links to Care Community Grants

Core Team Members

Core Team Member	NEW. Community Clinic	Bellin Health
Health System Leadership	Kim Franzen	Jen Macdonald and Sarah Jensen
Clinical Champion (MD, DO, PA, NP, RN, MA)	Penny LePine	Amy Bradley and Jill Spejcher
Quality Improvement Lead	Penny LePine	Lori Notz
Information Technology	Penny LePine	Lori Notz
Populations Health Manager	Kim Franzen and Penny LePine	Maggie Koch
Care Coordinator/Navigator	Penny LePine and case management team	Maggie Koch and case management team
Marketing/Community Outreach	Kim Franzen	Holly Schroeder
Grant Administration	Kim Franzen	Jeannette Brittain Ashley Jones
American Cancer Society Staff Partner	Kim Kinner	Kim Kinner

Meeting Schedule:

Monthly- 3rd Tuesday
of every month @
10am for 1 hour



AIM Statement

AIM Statement

We aim to increase access to breast cancer screening and reduce delays in follow up care in women aged 40 and older by increasing breast cancer screening rates from 44% to 64% and developing a process to ensure timely follow-up and treatment through multicomponent interventions in partnership with Bellin Health by December 31, 2024. It is important for us to work on this now because breast cancer is the most common diagnosed cancer in WI and it's about preventative care to keep the community well and increase access to care while ensuring quality outcomes with evidenced based practices.



Thank You