



Neighborhood Health Partnerships (NHP) Program

Program Overview

Wisconsin Cancer Summit
November 2, 2023

<https://nhp.wisc.edu/>



Sponsored by  Institute for Clinical and Translational Research
UNIVERSITY OF WISCONSIN-MADISON

The Challenge and Opportunity

The Challenge

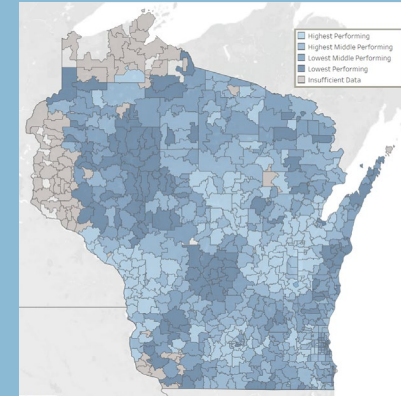
Health is shaped by **local conditions** but...

most health data are only available at county level or higher and/or updated infrequently

making it challenging to identify priority areas and monitor the effectiveness of programs and interventions

The Opportunity

Partnership with WCHQ for EHR data at the ZIP code level for >5 million patients



The Opportunity

Electronic health record data from over 75% of primary care providers in Wisconsin



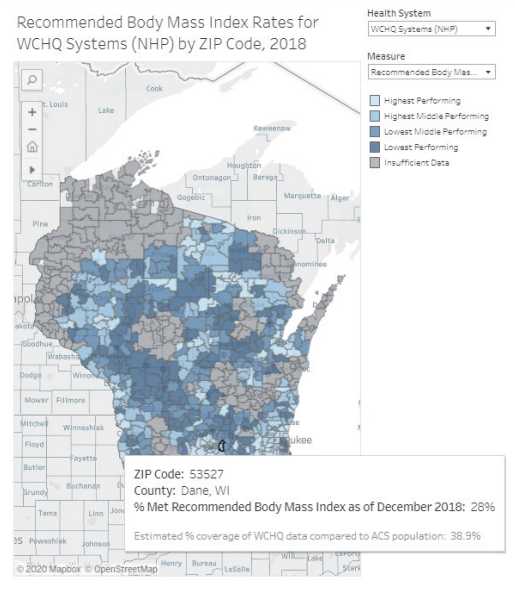
27 primary care measures identically coded across health systems

Vaccinations/Wellness	<ul style="list-style-type: none"> Childhood vaccinations Adolescent vaccinations HPV vaccination Pneumonia vaccination Well Child Visit in first 15 months of life
Screenings	<ul style="list-style-type: none"> Breast cancer screening Cervical cancer screening Chlamydia screening in women Colorectal cancer screening Depression screening
Risk Factors for Chronic Disease	<ul style="list-style-type: none"> Recommended Body Mass Index Blood Pressure Control
Heart Disease Care	<ul style="list-style-type: none"> Blood Pressure Control Daily Aspirin Statin Use Tobacco-Free Optimal Control
Diabetes Care	<ul style="list-style-type: none"> Blood Pressure Control Blood Sugar Control Blood Sugar Testing Daily Aspirin eGFR Test Kidney Function Monitored Optimal Control Optimal Testing Tobacco-Free Statin Use



NHP Resources

Maps

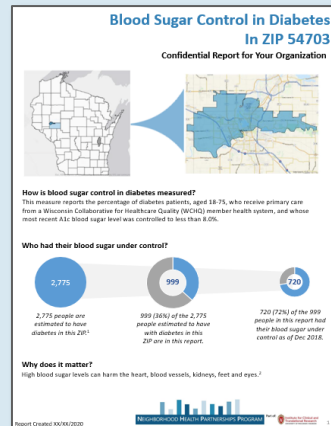


Maps to help in selecting measures/ZIPs of interest

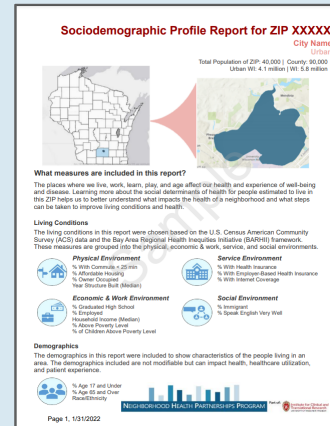
Reports

2 Categories

Health Outcome and Care Reports using WCHQ data



Social Determinants of Health Reports using Census data



Tools



Action tools



Partnerships tool

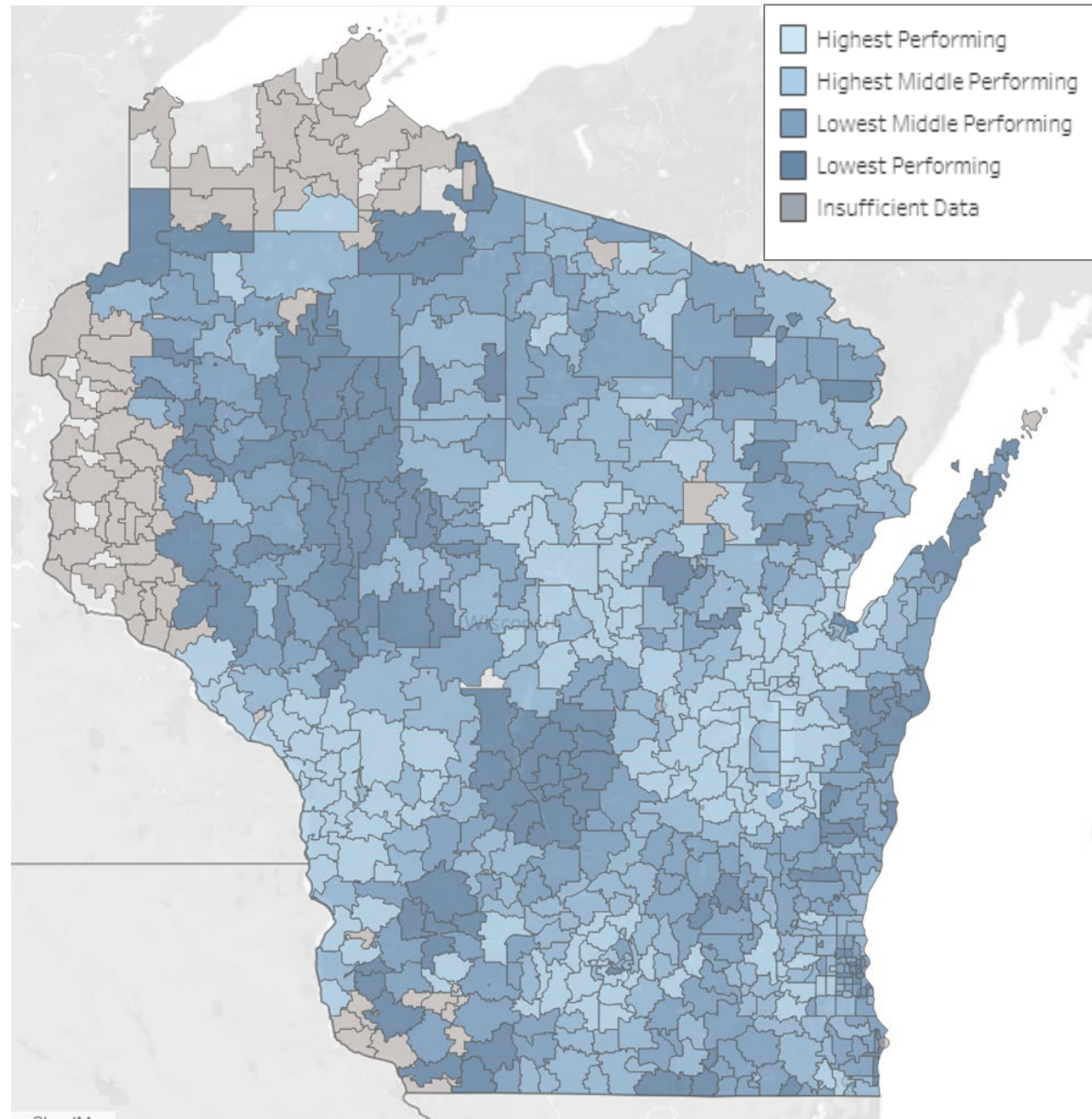


Policy tool



Placing SDOH in context tool

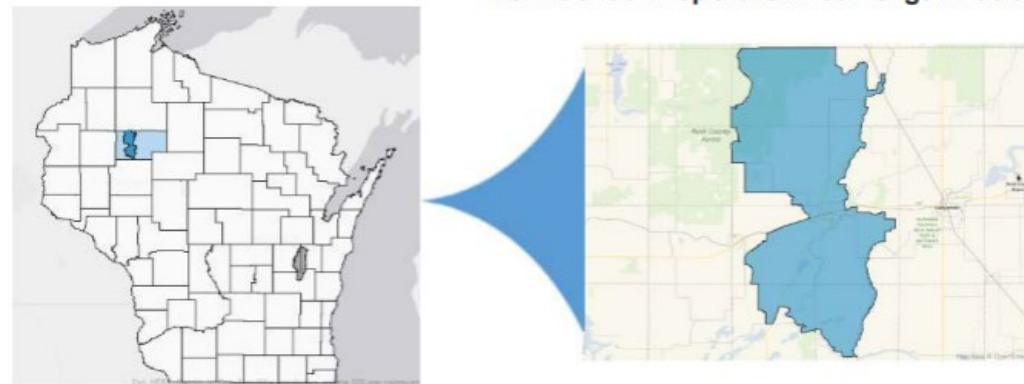
Colorectal Cancer Screening Rates (2022)



Sample Report: Page 1

Colorectal Cancer Screening for ZIP 54819

Confidential Report for Your Organization



How is colorectal cancer screening measured?

This measure reports the percentage of adults, aged 50-75, who receive primary care from a Wisconsin Collaborative for Healthcare Quality (WCHQ) member health system, and received a screening for colorectal cancer. This could include a colonoscopy within the 10-year measurement period, a CT colonography or flexible sigmoidoscopy within the 5-year measurement period, or a stool test within the 1-year measurement period.

Who had a colorectal cancer screening?



1,025 people are estimated to live in this ZIP that are eligible for this measure.¹



670 (65%) of the 1,025 people estimated to live in this ZIP are in this report.



457 (68%) of the 670 people in this report had a colorectal cancer screening as of Dec 2018.

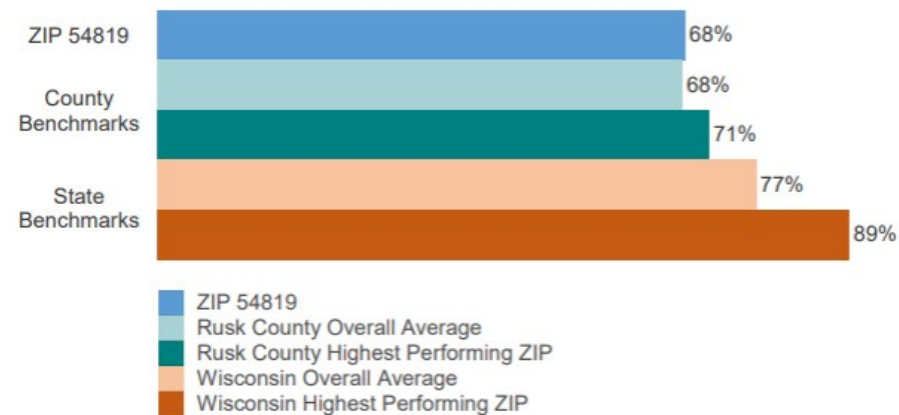
Why does it matter?

Screening tests help find abnormal growths so they can be removed before they turn into cancer. Screening also helps find cancer at an early stage, when treatment works best.²

Sample Report: Page 2

Colorectal Cancer Screening for ZIP 54819

How does this ZIP compare to others?



How has this measure changed over time?

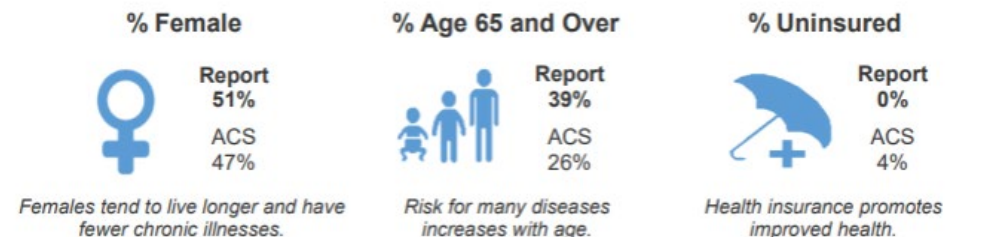


Sample Report: Page 3

Colorectal Cancer Screening for ZIP 54819

Who lives in this ZIP?

Learning about the people who live in a neighborhood can help you understand the health needs of the community. This section provides information about the people included in this report and how they compare to overall population estimates from the American Community Survey (ACS). The most recent ACS population of this ZIP is 2,370.



Race/Ethnicity



People from racial and ethnic minority groups may experience physical, economic & work, service, and social environments that lead to poorer health outcomes.

What else impacts health in this neighborhood?

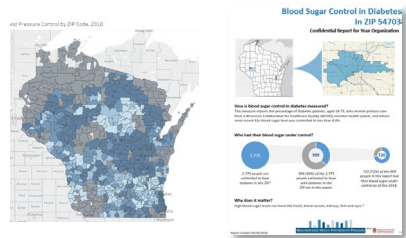
The living conditions of a neighborhood shape health more than healthcare alone. To understand the causes of poor health in a ZIP, consider:

1. Have current or past policies reinforced systemic racism and/or income inequality in the neighborhood? Think across key sectors like business, education, and criminal justice.
2. Do all residents have a fair chance to make a livable wage?
3. Do all residents have access to safe, affordable housing?
4. Are all residents able to receive quality medical care? What barriers may be preventing this?
5. Do all residents have convenient access to nutritious food options?

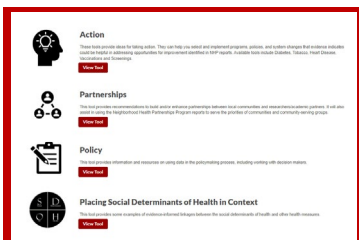
For more questions to consider and information about social determinants of health, visit www.nhp.wisc.edu/action.

NHP request process, stakeholders, and uses

Data: Submit request form on NHP website

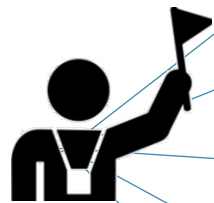


Action tools: Available on NHP website



Tools

NHP Navigators



Health Systems & Clinics



Community Organizations



Researchers



State and Local Government Organizations



Community Pharmacies



Uses

Identify & target disparities

Direct services/resources

Strengthen grant applications

Establish new partnerships

Develop new programs

Monitor & evaluate

Prioritize focus areas

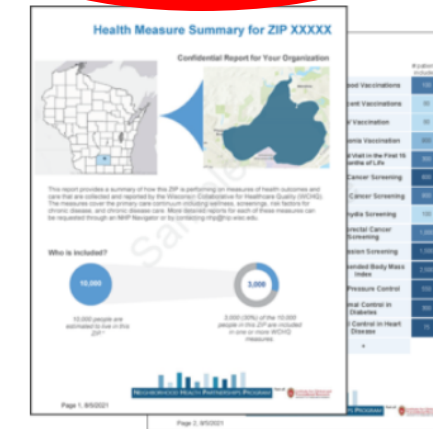
Requesting NHP Reports

- 1) Visit www.nhp.wisc.edu/reports
 - View example reports
- 2) Click "Request a Report"
- 3) Fill out brief Qualtrics form
- 4) Reports typically delivered within 2-3 business days

Health Outcome and Care Reports

These reports include electronic health record data for any individual that health system. For all WCHQ measures, higher performance is considered under control). These reports also use U.S. Census American Community data in these reports, go to the [Data](#) page. Below are brief descriptions a

Request a Report



Health Measure Summary Report measures publicly reported by the health system. This report if you want to explore

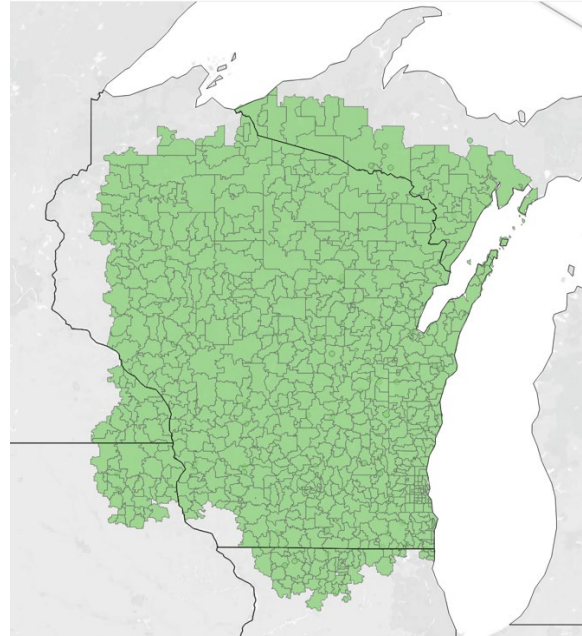
- Example report
- FAQs

Data improvements in progress



Updating data from 2018
to 2022

- Regularly update every 6-9 months
- Look at trends over time



Extending NHP
data to bordering
states



Addition of Sixteenth
Street Community
Health Center data



Institute for Clinical and
Translational Research
UNIVERSITY OF WISCONSIN-MADISON



Wisconsin Partnership Program
UNIVERSITY OF WISCONSIN
SCHOOL OF MEDICINE AND PUBLIC HEALTH



WISCONSIN
COLLABORATIVE *for*
HEALTHCARE QUALITY



Health Innovation Program
Integrating healthcare research and practice



University of Wisconsin
Population Health Institute
SCHOOL OF MEDICINE AND PUBLIC HEALTH



Community-Academic Partnerships

UW Institute for Clinical and Translational Research

NHP Sponsors and Partners Over Time



NEIGHBORHOOD HEALTH PARTNERSHIPS PROGRAM

Part of:



Institute for Clinical and
Translational Research
UNIVERSITY OF WISCONSIN-MADISON



www.nhp.wisc.edu/reports



nhp@hip.wisc.edu