

A faded, circular image of the Wisconsin state seal is positioned on the left side of the slide, partially overlapping the blue background. The seal depicts a Native American figure holding a bow and arrow, with a star above the figure's right shoulder.

# COVID-19, Cancer Screenings, Care, and the Impacts on our Tribal Communities:

*A special webinar featuring Share the Care*

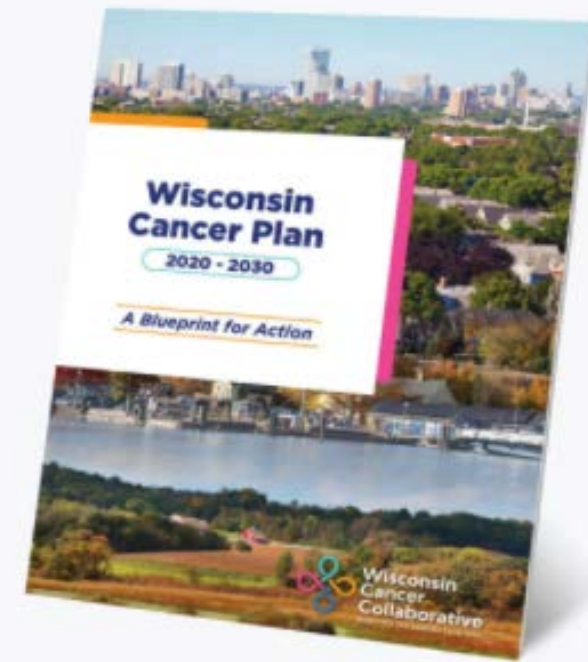
**September 9, 2021**

# ***Before we get started...***

The **Wisconsin Cancer Collaborative** is a statewide coalition of over **140 organizations** working together to reduce the burden of cancer **for everyone** in Wisconsin.

We connect our members with the **tools**, **support**, and **knowledge** they need to create healthier communities.

## **Wisconsin Cancer Plan 2020-2030**



[www.wicancer.org](http://www.wicancer.org)

# ***Cancer Health Disparities Initiative***

The Cancer Health Disparities Initiative, in the UW Carbone Cancer Center, works with communities, researchers, individuals, and clinicians to improve the health of everyone who faces greater cancer risk.

Through life changing partnerships and alliances, CHDI aims to educate and advocate for those living with cancer while aiming to break down barriers that may inhibit cancer research and care.



# Agenda

Welcome – Share the Care

Robin Carufel

COVID-19 and the Impact on our Community

Deborah Black, MS, LPC

Cancers that Impact our Tribal Communities and Getting Back to Screening

Lyle Ignace, MD, MPH

“Spin to Win” giveaway

Jenelle Elza

Urban Community: Health & Wellness

Sara Deida, MSW

Closing and giveaways/evaluation

In Honor and In Memory

***\*Send chat message to “Beth Brunner” with additional names***



# Share the Care

Statewide Native Cancer Conference since 2003

***Covid - Cancer Screenings - Care &  
their impacts in our Tribal Communities***

*SHARE THE CARE*  
*STATEWIDE NATIVE CANCER*  
*CONFERENCE*

*Robin Carufel Lac Du Flambeau,*  
*Wisconsin*  
*September 9 , 2021*

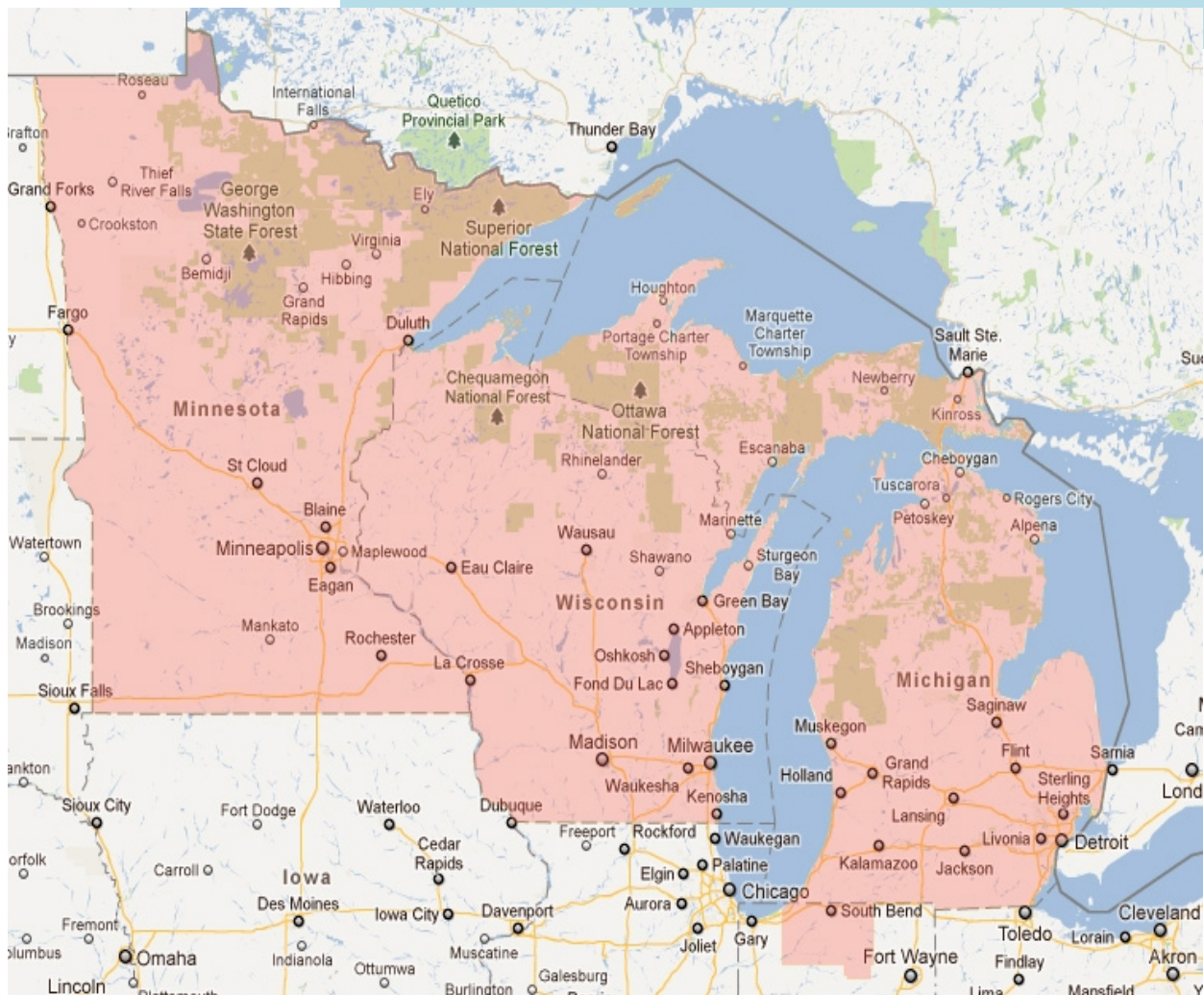


- Management experience with Tribal Health programs:
  - Lac Du Flambeau, WI - Peter Christensen Health Center
  - Mille Lacs, MN- Nay Ah Shing Tribal Clinic
  - Manistee, MI- Little River Tribal Health Service
  - Tribal Health Consultant- National, Regional & State
- Committed to improve health issues for members of Tribal communities.
- Extensive experience with Federal & State Programs and Personnel
- Tribal Healthcare Program Development & Administration
- Strategic Planning & Recruitment
- Past Analytical experience at Standard & Poors- Englewood CO
- Successful Self-Governance Consultant for Tribes





# Bemidji Area –Indian Health Service





# *Indian Health Service:*

## Organizational Structure:

- Venue for Service Delivery: “I/T/U”
  - Federal (I) Tribal (T) Urban (U)
- Twelve (12) Area Offices:

Alaska	Nashville
Albuquerque	Navajo
<b>Bemidji</b>	Oklahoma City
Billings	Phoenix
California	Portland
Great Plains	Tucson



# *Indian Health Service:*

## Bemidji Area Office

- **Wisconsin:**

- 11 Tribal Service Sites (T):

- **Bad River Band of Lake Superior Chippewa of the Bad River Reservation, Wisconsin**
- **Forest County Potawatomi Community, Wisconsin**
- **Ho-Chunk Nation of Wisconsin**
- **Lac Courte Oreilles Band of Lake Superior Chippewa Indians of Wisconsin**
- **Lac du Flambeau Band of Lake Superior Chippewa Indians of the Lac du Flambeau Reservation of Wisconsin**
- **Menominee Indian Tribe of Wisconsin**
- **Oneida Tribe of Indians of Wisconsin**
- **Red Cliff Band of Lake Superior Chippewa Indians of Wisconsin**
- **Sokaogon Chippewa Community, Wisconsin**
- **St. Croix Chippewa Indians of Wisconsin**
- **Stockbridge Munsee Community, Wisconsin**

- **Urban Indian:**

- 4 Urban Service Sites (U):

- **American Indian Health Service-Chicago**
- **American Indian Health & Family Services of Southeast Michigan-Detroit**
- **Gerald L. Ignace Indian Health Center**
- **Minneapolis Indian Health Board, Inc.- Minneapolis**



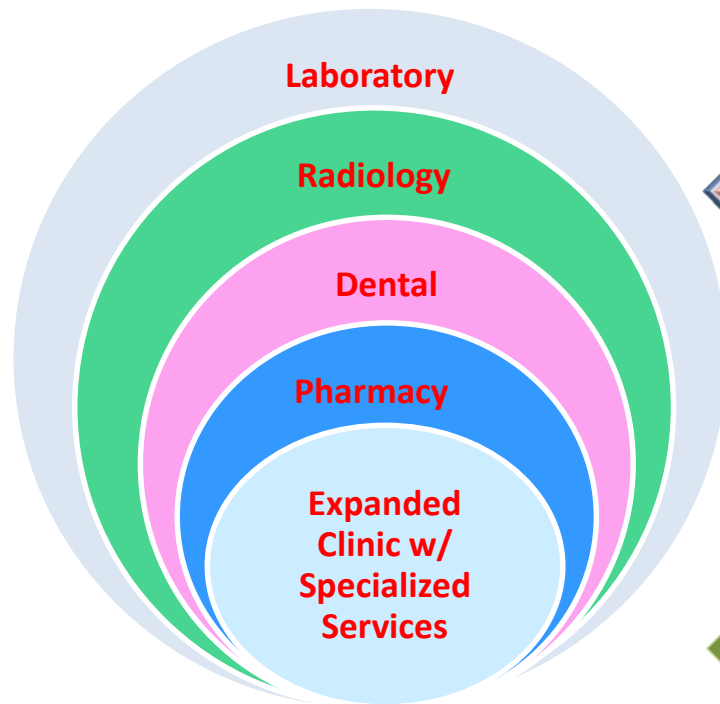
# Generational/Historical Trauma



# Integration of Tribal Clinics & Resources

American Indian Tribal Citizen  
American Indian Patient  
American Indian Employee  
OPEN to ALL Employees!!

IHS – Title Self-Determination Contracts/compacts  
Tribal CARES, ARPA Appropriation  
Employee Health Benefits  
Medicare, Medicaid  
Private/Tribal Employee Insurance



## Tribal Health \$ into System:

- Reimbursements
- Recovery Tribal Employee Benefits
- Return on Investment (ROI)
- Reduced Insurance Costs
- Tribe = CHAMPION for Total Community !!!**

Specialized Care: Oncology On-Site;  
Screenings, Coordinated Care with  
Primary Care @ Tribe

Total Tribal Health  
\$\$\$

## Specialty Services

Local physician groups, clinics, hospital-based providers

## Diagnostic x-ray and lab

Local hospital system, MCM

## Pharmacy

Local pharmacies, chains

## Hospitalization

Local hospital system, freestanding O/P facilities



# ***COVID-19 and the Impact on our Community***

## ***Deborah Black, MS, LPC***

***Director, Behavioral Health, Chief Executive Officer,  
Gerald L Ignace Indian Health Center-Milwaukee, WI***

***Licensed Professional Counselor***





# ***Cancers that Impact our Tribal Communities and Getting Back to Screenings***

***Lyle Ignace, MD, MPH***

***Chief Executive Officer, Gerald L Ignace Indian Health Center-  
Milwaukee, WI***

***Tribal member of the Menominee Indian Tribe of Wisconsin  
and Coeur d'Alene Tribe of Idaho***



# *Spin to Win ...virtually*



*with Jenelle Elza*

# ***Urban Community: Health & Wellness***

***Sara Deida, MSW***

***Center Manager, South Eastern Oneida Tribal Services  
Milwaukee, WI***



# Southeastern Oneida Tribal Services

AN OVERVIEW OF HISTORY, SERVICES AND PROGRAMS

# History

- ▶ 1992 – A group of dedicated volunteers and Oneida tribal members residing in Southeastern Wisconsin, organized and officially became recognized as the Oneida Indian Council of Southeastern Wisconsin
- ▶ Original Board Members: Chairwoman Alberta Metoxen, Vice-Chair Madelyn Genskow, Secretary Fred Muscavitch and Treasurer Roy Huff. Additional members included Kim Reyes, Jim Cooper, James Zakhar, Michael Debraska, Mark Denning, Bill Wheelock and Ester Olszewski.
- ▶ Purpose : Connect Oneida Tribal members to the services and programs of the Oneida Tribe.





# Southeastern Oneida Tribal Services

# SEOTS Today

- ▶ SEOTS is a satellite office serving Oneida Nation tribal members living in southeastern Wisconsin. The priority of improving wellness outcomes for the community is accomplished through community education and connection to quality programs and services.
- ▶ Mission Statement: Strengthening our cultural connection and providing services and programs to enhance the well-being of On<sup>^</sup>yote?a•ká living in southeastern Wisconsin.
- ▶ Service Area : The six counties that make up southeast Wisconsin: Milwaukee, Kenosha, Racine, Ozaukee, Washington and Waukesha.



# SEOTS Staff & Services

## ▶ Current Staff

**Manager** –Sara Deida, MSW

**Community Program**

**Coordinator** (FT Vacant)

**Administrative Assistant**

(2 PT- Vacant)

**Oneida Child Support Case**

**Managers:**

Anne Kreutzinger

Jenna Skenandore

## ▶ Services

▶ Oneida Pharmacy / Medication  
Distribution program

▶ Community Computer  
lab/equipment access

▶ Social Services applications &  
enrollment

▶ Referral Services

- ▶ Prescription medication distribution
- ▶ Oneida Benefits coordination
- ▶ Notary services
- ▶ Polling site for Oneida Elections
- ▶ Oneida retail products
- ▶ Color guard
- ▶ Community building events
- ▶ Community education
- ▶ Art and craft classes
- ▶ Culture classes
- ▶ Language classes
- ▶ Family outings
- ▶ Oneida trips
- ▶ Reading circle book club
- ▶ Youth programs
- ▶ Weekly elder activities



# Community

## ► Community Presentations

With the assistance of our community partners SEOTS has also hosted educational programs for our members and their families. These programs focused on the importance of culture, heritage, community & wellness.





# Community Partnerships



INDIAN  
COMMUNITY  
SCHOOL



# Navigating Healthcare

- ▶ SEOTS has hosted The Wisconsin Pink Shawl Initiative since its inception in 2007.
- ▶ The group conducts meetings, screening events and their Dream the Cure Conversation program. This incentive based educational program is open to all women.
- ▶ Connecting women with resources, Screenings and support when needed



# Yaw^ko



<https://www.facebook.com/southeasternoneidatribalservices/>



***Thank you!***

***QUESTIONS?***

# 2021 Virtual Wisconsin Cancer Summit - Registration Open!

*Building Blocks for a Strong  
Wisconsin: Tools to improve health  
and cancer outcomes in our  
communities*

Learn more and register for both days here:  
<https://wicancer.org/events/wisconsin-cancer-summit/>





# COVID & Cancer Resources

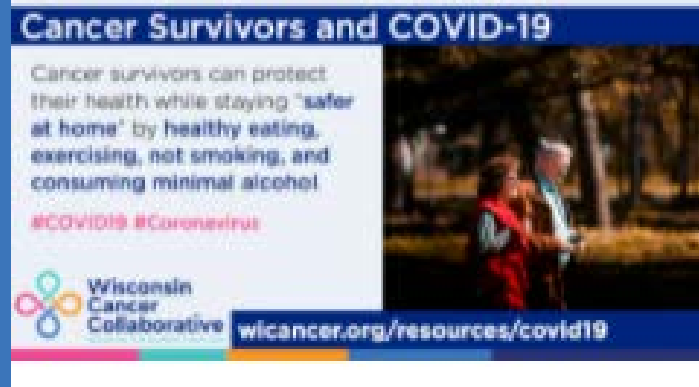
## Cancer Screening & COVID-19

### Social Media Toolkits



## COVID-19 & Cancer Patients

### Social Media Toolkits



## How to Get Safely Screened for Cancer During the Pandemic

### Fact Sheets



# Closing

\*Please complete the survey being posted in the chat and emailed after the webinar. Registered participants will be entered into a drawing for completing the survey!

*A special thank you to all of our speakers, planning committee, and to Carol Cameron for her dedication and passion to support this webinar and the Share the Care effort!*

*We hope that 2022 will bring us together again for an in person  
Share the Care!*



# In Honor and In Memory



Please remain with us for a few more minutes as we honor those individuals that have experienced a cancer diagnosis and hold in our hearts the memories of our loved ones that we have lost to cancer.



# In Honor



- Louise Zokan Delos Reyes
- Anne Egan-Waukau
- Gary Ushakow
- Shellie Kanter
- Mary Elm
- Charlene Smith
- Greg Johns
- Carolyn & Leon House
- Bernstein Jeffers
- Nikki Panico



# In Honor



- TBD

- TBD

- TBD



# In Memory



- Florence St Clair  
Zokan
- Hazel St Clair  
Schulist
- Ruby St Clair  
Warren
- Genevieve St Clair  
Coquilte
- Julie Darrough
- Melodie Wilson  
Oldenburg
- Frances  
Regenfelder
- Mary Nattolini  
Zokan
- TBD





# In Memory



- TBD

- TBD

- TBD